



2024

Company Profile

Shanghai Baud Data Communication Co., Ltd.

01

Part

About BDCOM

30-year expertise in networking product & solution
Recognized industry leader in R&D and Manufacturing



30 Years of Technology Exploration



1994
Established

1200+
Employees

\$300M+
Turnover

R&D Center



Experienced PhD and Master engineers



Good numbers of product invention patents & software copyrights



Test Center



Full-equipped testing instruments for hardware and software



Top-class international testing standards for stability and reliability



Production Bases

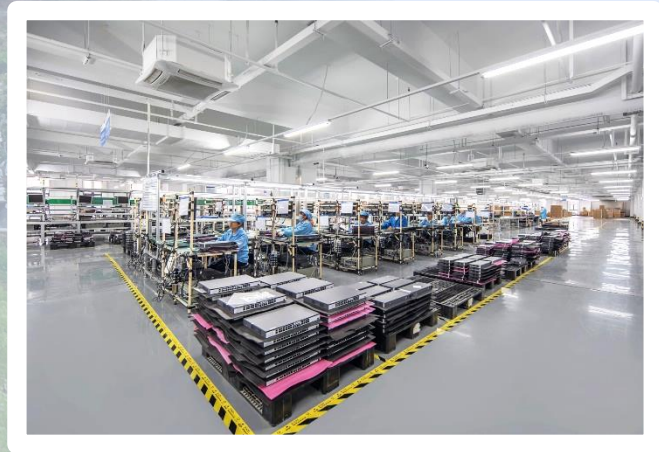


Shanghai Jinshan High-end Manufacturing Center

Plant Area: 35,000 m²

Capacity: 1 million units per year

Focus: Telecom & Enterprise-grade products



Production Bases

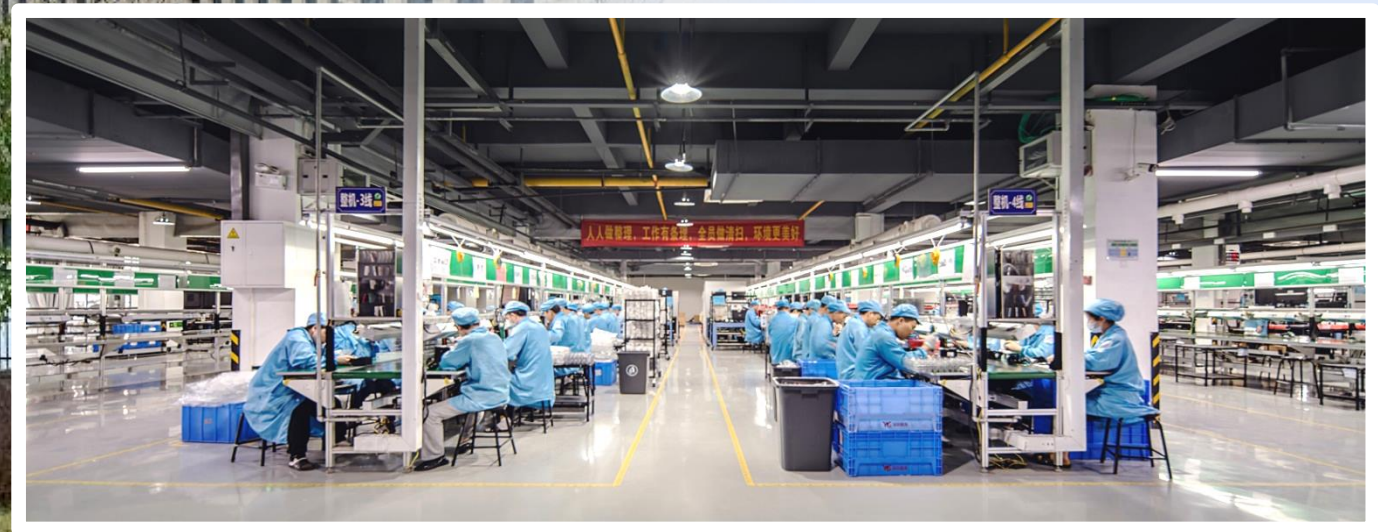


Wuhan Optics Valley Manufacturing Center

Focus: Soho & SMB-grade products

Plant Area: 90000 m²

Capacity: 5 million units per year



Production Bases

Kunshan Manufacturing Center

Focus: Industrial-grade products

Plant Area: 10000 m²

Capacity: half million units per year



Production Bases

Dongguan Manufacturing Center

Focus: IoT & Consumer products

Plant Area: 20000 m²

Capacity: 3 million units per year



Milestones



1994

Pioneer in X.25 Networking Card, significant breakthrough in China



1998

First-ever Chinese Router developed and launched into market



2005

First-generation Chassis Switches launched



2008

xPON solution developed and widely deployed in CATV industry



2012

Industrial-grade switches introduced to Energy and Transportation Industries



2017

WiFi product line added to BDCOM portofolio

1994

Four Founders

2001

Headquartered in Zhangjiang Hi-Tech Park also known as "China Silicon Valley"

2004

10th Anniversary Celebration

2007

Set foot in International markets

2016

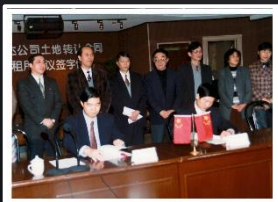
35000 m² Shanghai manufacturing center and 90000 m² Wuhan Manufacturing center put into operation

2021

overseas branch offices and support centers came into service

2024

30th Anniversary Celebration



Qualifications



CMMI5



Software Backbone Enterprise
Star Hi-Tech Enterprise
Specialized “Little Giant” Enterprise
Made-in-China Model Enterprise
Shanghai Top 100 exporter
E-government Top100 IT Firm



Business Distribution



- 40+ major telecoms and countless ISPs and MSOs are using BDCOM products & solutions to service corporate and soho subscribers

- Growing numbers of successful cases from different industries deployed BDCOM wired & wireless solutions

Partners



Not fully included.....

International Business



Global events: Exhibition, Seminar, Roadshow

02

Part

Product & Solution



Switch



xPON



Router



Wireless



Switch

Products and Solutions

One-stop switching solution covering from core, aggregation to access layer, Rich portfolio meeting all the requirements from different industries.

Data Center Switch

S9500, S5800

Core Switch

S8500E

Layer-3 Switch

S5600, S5700
S3900/PoE, S2900/PoE

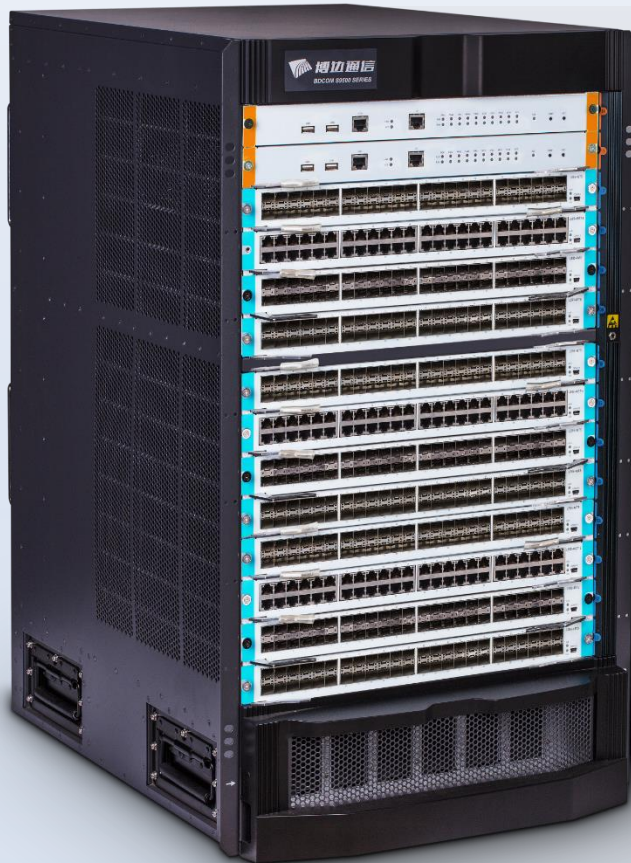
Access Switch

S2500/PoE, S1500/PoE,
S1200/PoE, S1000/PoE



Campus-grade Core Chassis

S9514



S9510



S9506



S9500

Top-class reliability

Robust throughput

Innovative virtualization

Enterprise-grade Core Chassis

S8500E

Classic Series

- Oriented for 40GE platform and support carrier-level capacity and expandability.
- 99.999% high-usability.
- Innovative BVSS (BDCOM Virtual Stacking System) technique.
- Provide complete layer-2 and layer-3 multicast, routing and IPv6 solutions.



SMB-grade Core Chassis



S8003E

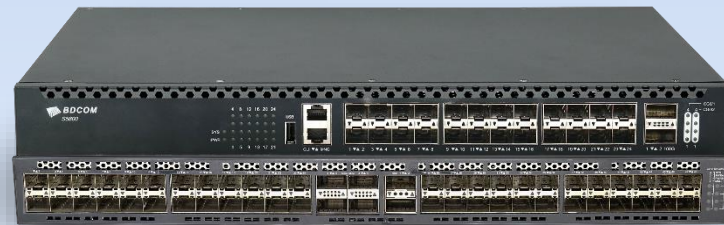
Disruptive box

- Multiple options of 10G line card with different port combination
- Rich features and friendly interface for L2 and L3 Switching Config
- Carrier-grade stability for future expansion

L3 10G/100G Switch Series



• S5612E



• S5800-24X2C

• S5864HB

- **Carrier-grade reliability**
- **BVSS Stackability**
- **Multimodal Management**

Model	Specification
S5612E	12-Port 10G SFP+ 8-Port Gigabit RJ45
S5800-24X2C	24-Port 10G SFP+ 2-Port 100G QSFP28
S5864HB	48-Port 10G SFP+ 2-Port 40G QSFP+ 4-Port 40/100G QSFP28

L3 Switch

- Multi-Giga Solution

S5700 Series



S3900 Series



Model	Specification	Model	Specification
S5700-8ET4X	8-port 2.5G RJ45 + 4-port 10G SFP+	S3900-24T6X	24-port gigabit RJ45 + 6-port 10G SFP+
S5700-8EP4X	8-port 2.5G PoE++ 4-port 10G SFP+	S3900-24S8T6X	24-port gigabit SFP + 8-port gigabit RJ45 + 6-port 10G SFP+
S5700-24ET6X	24-port 2.5G RJ45 + 6-port 10G SFP+	S3900-48M6X	24-port gigabit SFP + 24-port gigabit RJ45 + 6-port 10G SFP+
S5700-24EP6X	8-port 2.5G PoE++ 16-port 2.5G PoE+ 6-port 10G SFP+	S3900-48S6X	48-port gigabit SFP + 6-port 10G SFP+
S5700-48ET4X2Q	48-port 2.5G RJ45 + 4-port 10G SFP+ 2-port 40G QSFP+	S3900-48P6X	48-port gigabit PoE+ 6-port 10G SFP+

L3-lite Switch

S2900 Series



S2500 Series



Model	Specification	Model	Specification
S2900-8T4X	8-port gigabit RJ45 + 4-port 10G SFP+	S2900-48P6X	48-port gigabit PoE+ 6-port 10G SFP+, 370W AC PoE budget, 740W DC PoE budget
S2900-8P4X	8-port gigabit PoE+ 4-port 10G SFP+	S2900-48P6X-370	48-port gigabit PoE+ 6-port 10G SFP+, 370W AC PoE budget
S2900-24T4X	24-port gigabit RJ45 + 4-port 10G SFP+	S2900-48P6X-760	48-port gigabit PoE+ 6-port 10G SFP+, 760W AC PoE budget
S2900-24S8C4X	16-port gigabit SFP + 8-port gigabit RJ45/SFP combo + 4-port 10G SFP+	S2510-C	8-port gigabit RJ45 + 2-port gigabit SFP
S2900-48T4X	48-port gigabit RJ45 + 4-port 10G SFP+	S2510-P	8-port gigabit PoE+ 2-port gigabit SFP, 125W PoE budget
S2900-48T6X	48-port gigabit RJ45 + 6-port 10G SFP+	S2520-P	16-Port Gigabit PoE+ 2-Port Gigabit SFP + 2-Port Gigabit RJ45/SFP Combo, 250W PoE budget
S2900-24P4X	24-port gigabit PoE+ 4-port 10G SFP+, 370W PoE budget	S2528-C	24-port gigabit RJ45 + 4-port gigabit SFP
S2900-48S6X	48-Port gigabit SFP + 6-Port 10G SFP+	S2528-P	24-port gigabit PoE+ 4-port gigabit RJ45/SFP combo, 370W PoE budget

Unmanaged Switch



Model	Specification	Model	Specification
S1000-4P2F	4-port 100M PoE+ 2-port 100M RJ45, 60W PoE budget	S1500-16P2S	16-port gigabit PoE+ 2-port gigabit SFP, 180W PoE budget
S1000-8P2F	8-port 100M PoE+ 2-port 100M RJ45, 90W PoE budget	S1500-24P2S	24-port gigabit PoE+ 2-port gigabit SFP, 280W PoE budget
S1200-8P2G	8-port 100M PoE+ 2-port gigabit RJ45, 90W PoE budget	S1500-24P2S-370	24-port gigabit PoE+ 2-port gigabit SFP, 370W PoE budget
S1200-16P2G1S	16-port 100M PoE+ 2-port gigabit RJ45 + 1-port gigabit SFP, 180W PoE budget	S1500-8T	8-port gigabit RJ45
S1200-24P2G1S	24-port 100M PoE+ 2-port gigabit RJ45 + 1-port GE SFP, 280W PoE budget	S1500-16T	16-port gigabit RJ45
S1200-24P2G1S-370	24-port 100M PoE+ 2-port gigabit RJ45 + 1-port GE SFP, 370W PoE budget	S1500-24T	24-port gigabit RJ45
S1500-8P2G	8-port gigabit PoE+ 2-port GE uplink RJ45, 90W PoE budget	S1500-24T2S	24-port gigabit RJ45 + 2-port gigabit SFP

Industrial

Products and Solutions

BDCOM has three series of industrial Ethernet switches widely applied in the fields of rail transit, bridge, tunnel, smart grid, wind photovoltaic power, factory automation and industrial monitoring.

Smart grid solution
Intelligent rail transit solution
Safe City Solution





IES200-V25

All-gigabit managed
Industrial Ethernet
Switch



IES200-L25

All-gigabit managed
Industrial Ethernet
Switch

Industrial Switch



IES2000-T

Carrier-level LTE-mobile
Backhaul Industrial
Ethernet Switch



IES2000

L3-lite Industrial
Ethernet Switch

⚡ IES200-V25 Series

- 6, 10, 14-port DIN-rail series, with PoE/non-PoE models
- Operating temperature $-40^{\circ}\text{C}\sim 75/85^{\circ}\text{C}$, IP40 protection, EMC4 level

⚡ IES200-L25 Series

- 6, 10, 12-port DIN-rail L3-lite series, with PoE/non-PoE models
- Operating temperature $-40^{\circ}\text{C}\sim 75^{\circ}\text{C}$, IP40 protection, EMC4 level

⚡ IES2000-T Series

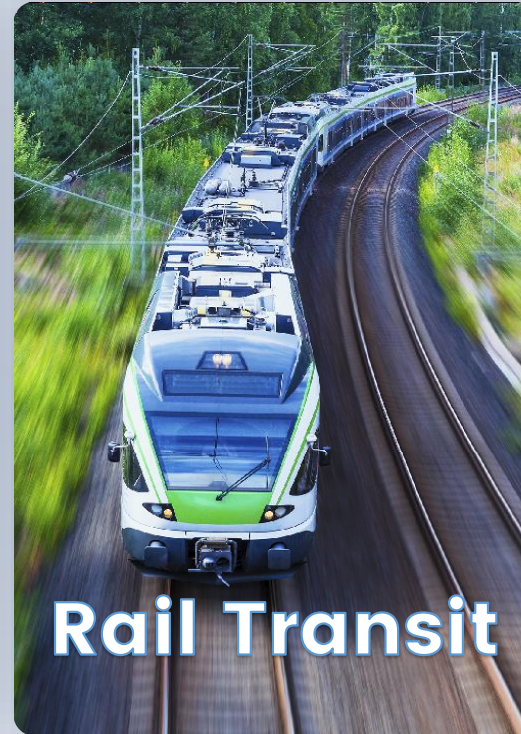
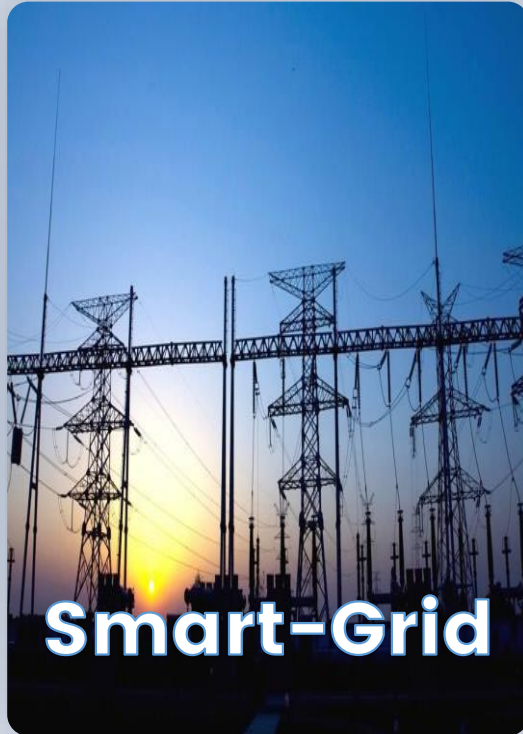
- Half-rack/Din-rail series, with PoE/non-PoE models
- Up to 20 GE + 4 10GE ports
- Supporting PTP 1588v2
- Operating temperature $-40^{\circ}\text{C}\sim 85^{\circ}\text{C}$, IP40 protection, EMC4 level

⚡ IES2000 Series

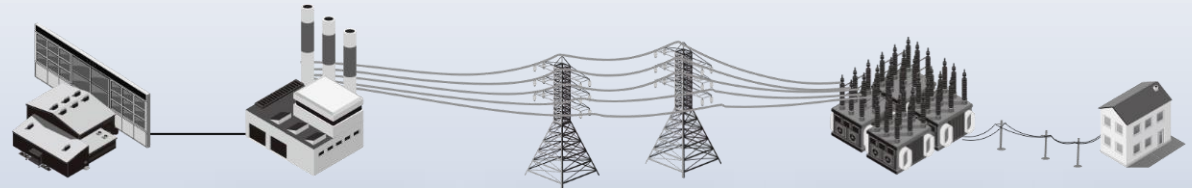
- 10G-up L3 rack-mounted stackable series
- Anticorrosive aluminum alloy chassis, corrugated conduction heat dissipation design
- Operating temperature $-40^{\circ}\text{C}\sim 85^{\circ}\text{C}$, IP40 protection, EMC4 level.



Industrial Network Solutions



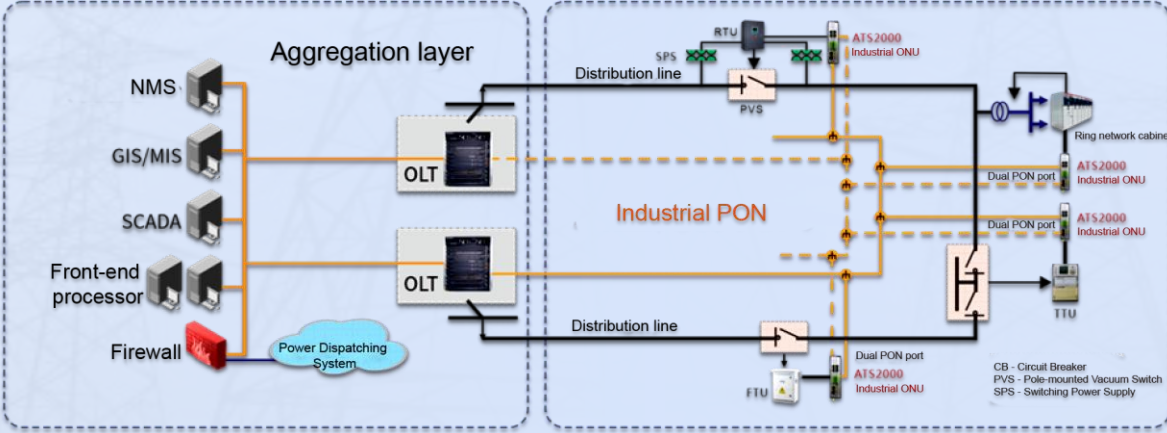
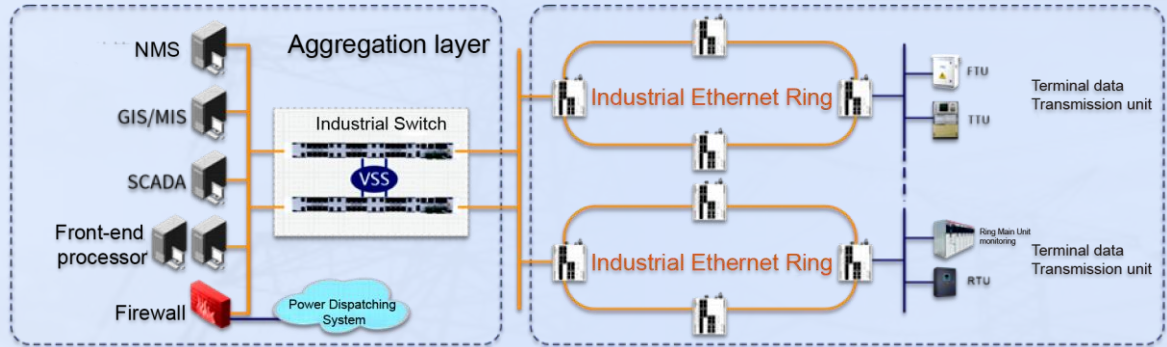
Smart-Grid Solution



Generation **Transformation** **Distribution** **Usage**

China Southern Power Grid
Industrial Switch

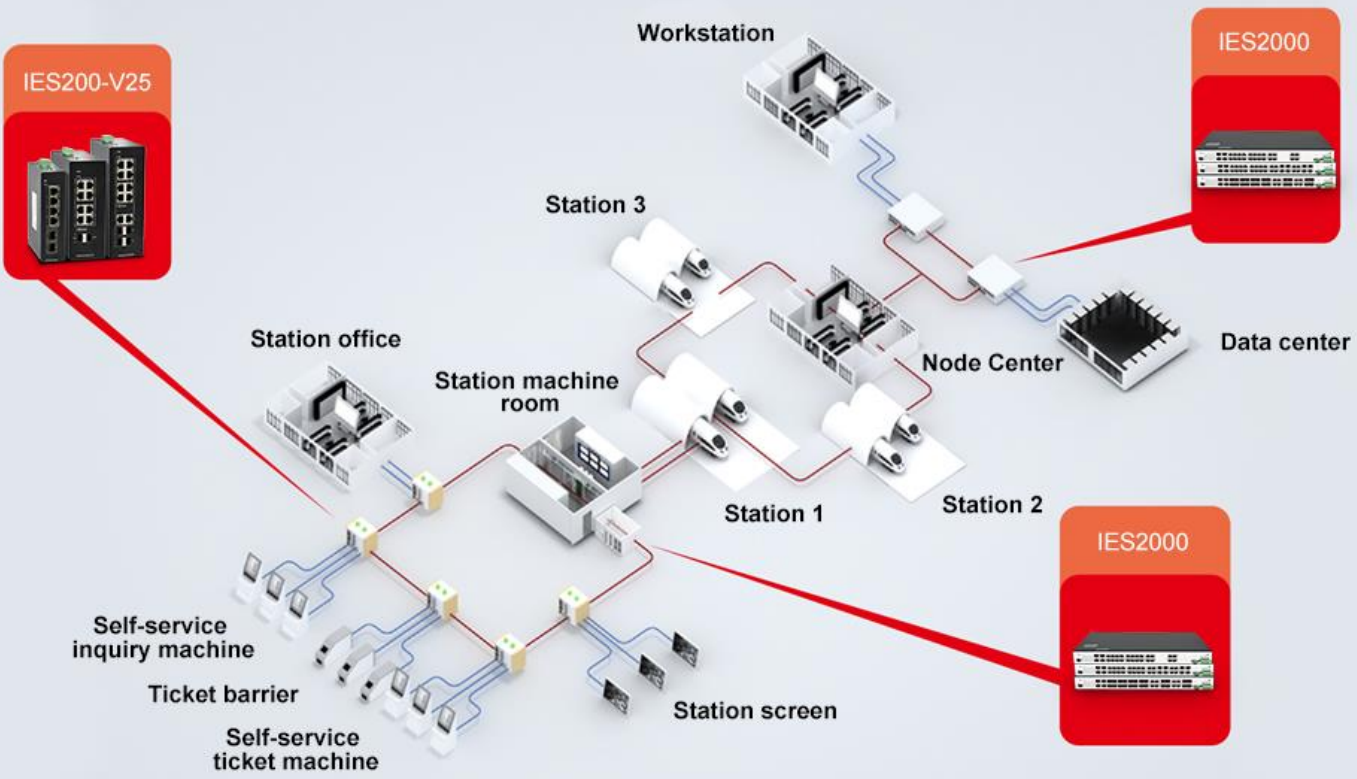
State Grid
Industrial PON



- ✓ **High reliability**, self-healing in milliseconds
- ✓ **Anti-interference**, EMC4A
- ✓ **Real-time**, PTP1588 precise clock
- ✓ **Multi-service access**, optical Ethernet, RS232/485 serial port, POE power supply
- ✓ **Reliability**, dual PON ports, Type c hand in hand
- ✓ **Anti-interference**, EMC4A
- ✓ **Wide coverage**, easy to deploy
- ✓ **Light operation and maintenance**, strong security

Rail Transit Solution

Automatic Fare Collection System (AFC)



Passenger Information System (PIS)

Automatic Fare Collection System (AFC)

Integrated Supervisory Control System (ISCS)

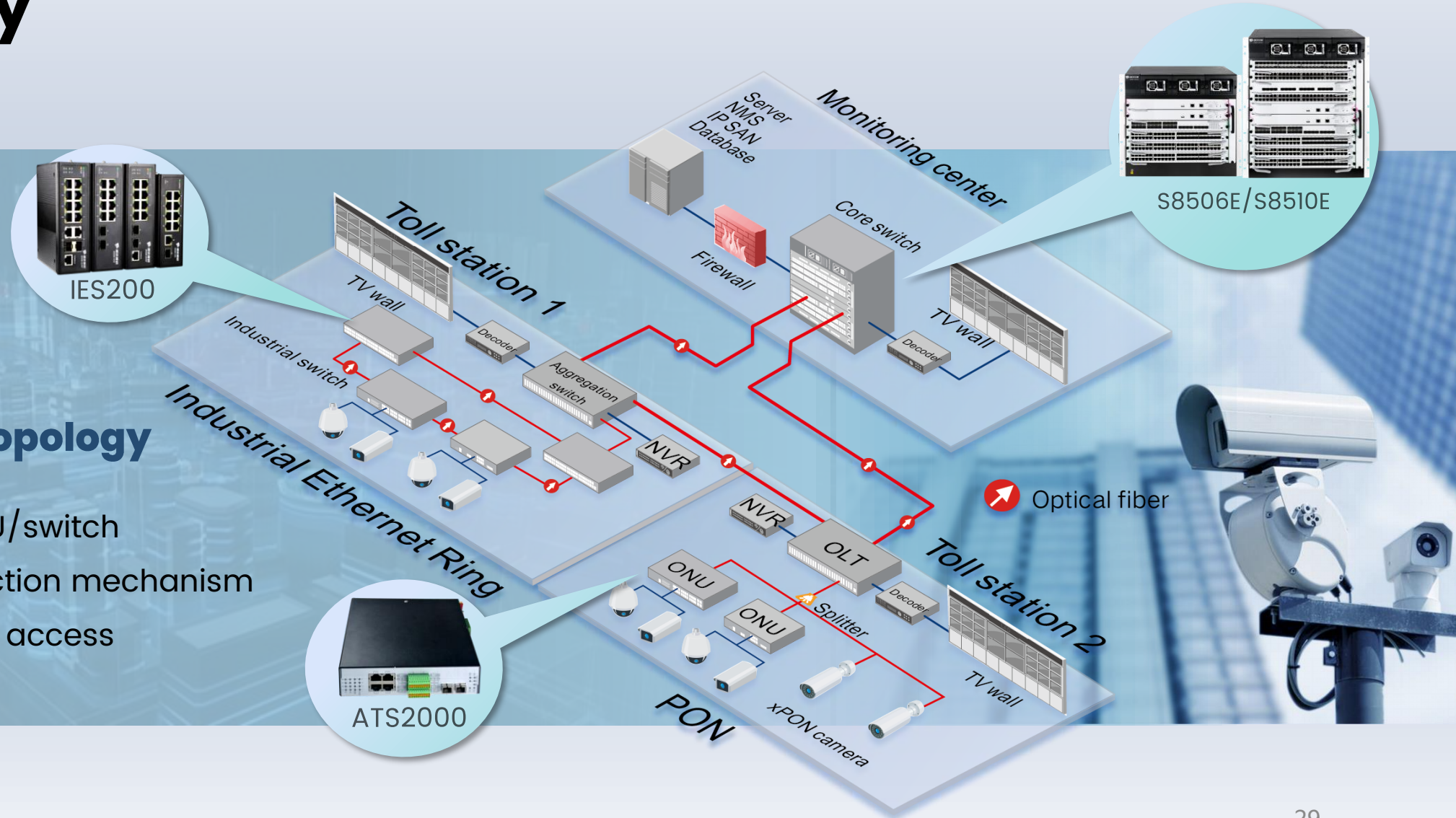
Information Screening and Delivery System (ISDS)

Safe City



Solution Topology

- Industrial ONU/switch
- Perfect protection mechanism
- Rich business access



xPON



Products and Solutions

BDCOM has rich xPON product lines, covering EPON, GPON, 10GEPON, XG(S)PON (under development).

POL Solutions
FTTH Solutions





xPON Chassis



XG(s)-PON

xPON Series



GPON



EPON

xPON OLT: GP6606 Series

GPON OLT: GP3600 Series

EPON OLT: P3000 Series

XG(s)-PON OLT: GP8600 Series

- Distributed architecture to meet line speed forwarding.
- Dual MCU and dual power supply redundancy, TypeB/C dual-homing protection, carrier-level reliability.
- Support access and aggregation integration of EPON/GPON/10GEPON/XG(S)PON/GE/10GE to reduce costs.
- Large capacity, high density, support up to 128 EPON/GPON and 64 10GEPON/XG(S)PON.
- Support routing function to achieve dual roles of PON access and core/aggregation.
- Support layer-3 routing

ONU Family

Data ONU



SFU



In-wall SFU



PoE+ MDU



MDU

WiFi ONU



WiFi4



WiFi5



WiFi6

Voice ONU



In-wall Voice



WiFi5+ Voice



WiFi6+ Voice

CATV ONU



SFU



WiFi4+ CATV



WiFi5+ CATV



WiFi6+ CATV



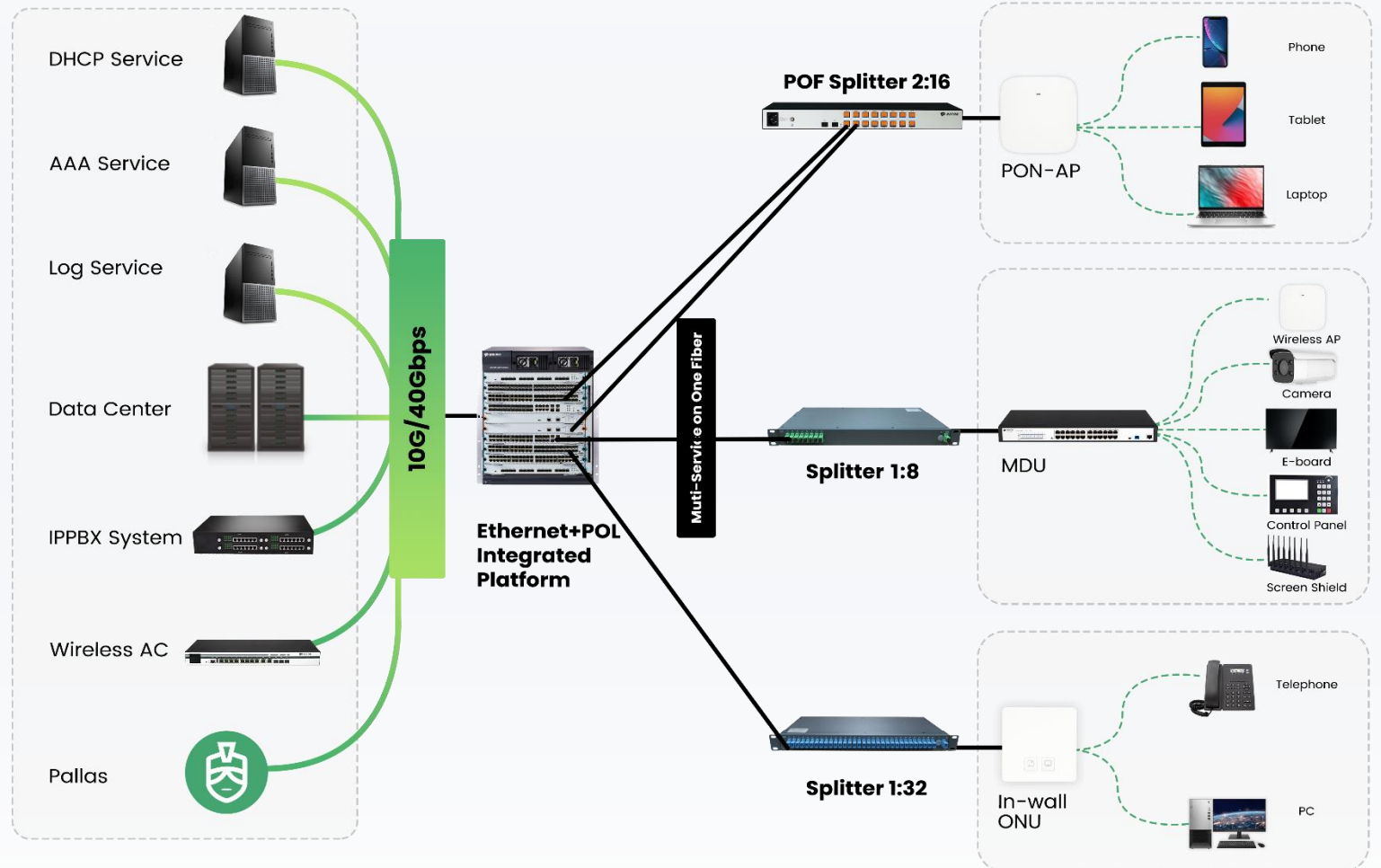
xPON Series Solutions



Passive Optical LAN Solutions

POL Solution:

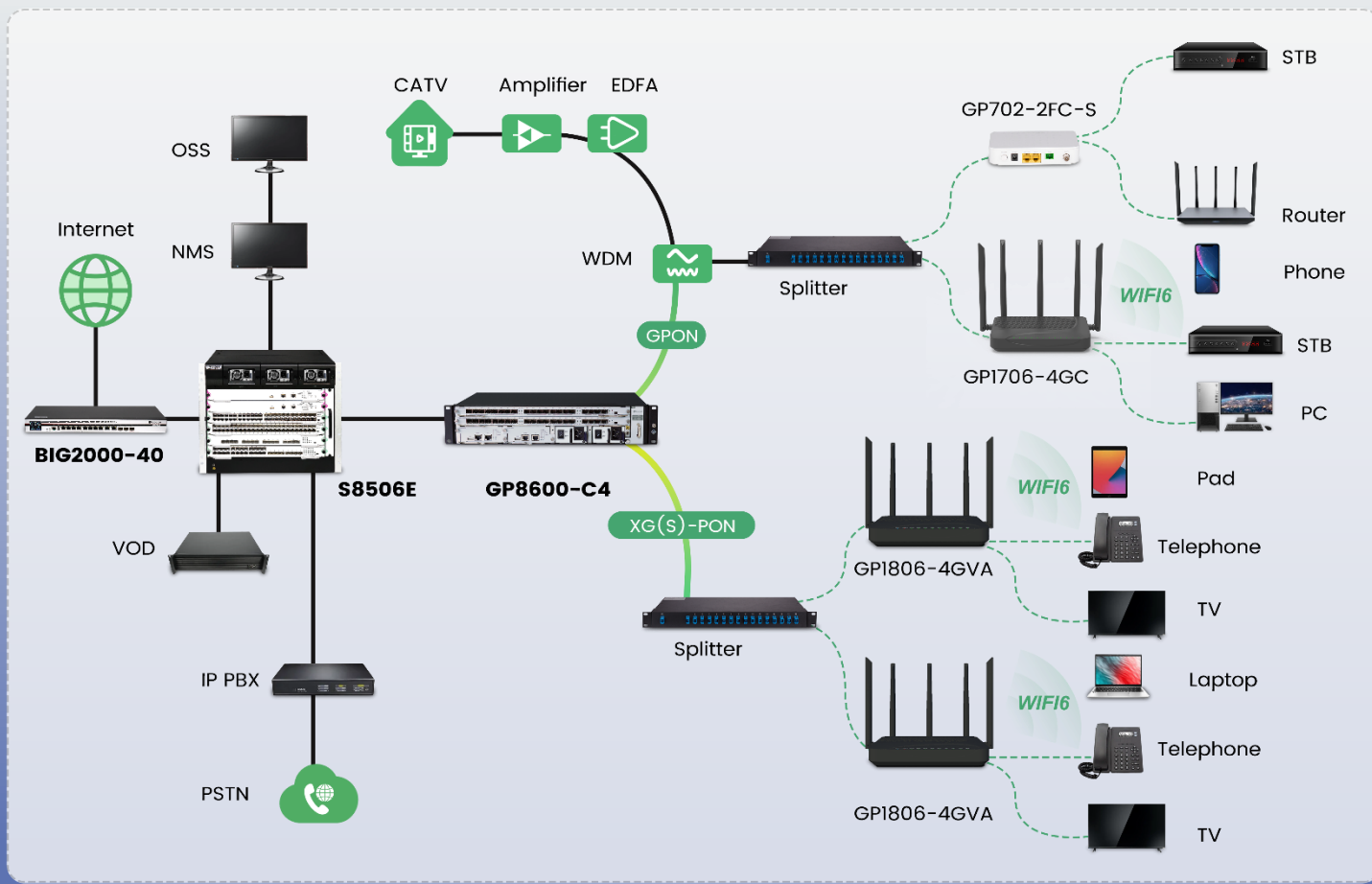
- Passive ODN occupies small space, which reduces construction investment and energy consumption
- Simple and convenient deployment
- Few failure points, to facilitate maintenance and management
- Multi-service integration;
- Unified management;
- Smooth upgrade to 10G, 40G;
- Reduced overall cost .



FTTH Solutions

Support Ultra HD Gigabit access

FIBER TO THE HOME



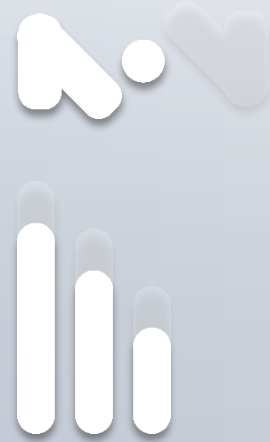
Smooth evolution

- ✓ Sharing platform of EPON, GPON, 10GEPON, XG(S) PON
- ✓ Support 4K HD devices

Service quality assurance

- ✓ Large bandwidth, support multi-service IP
- ✓ Dual fiber three wave, single fiber three wave, IPTV terminal
- ✓ Support QoS to guarantee important services

Router & Wireless

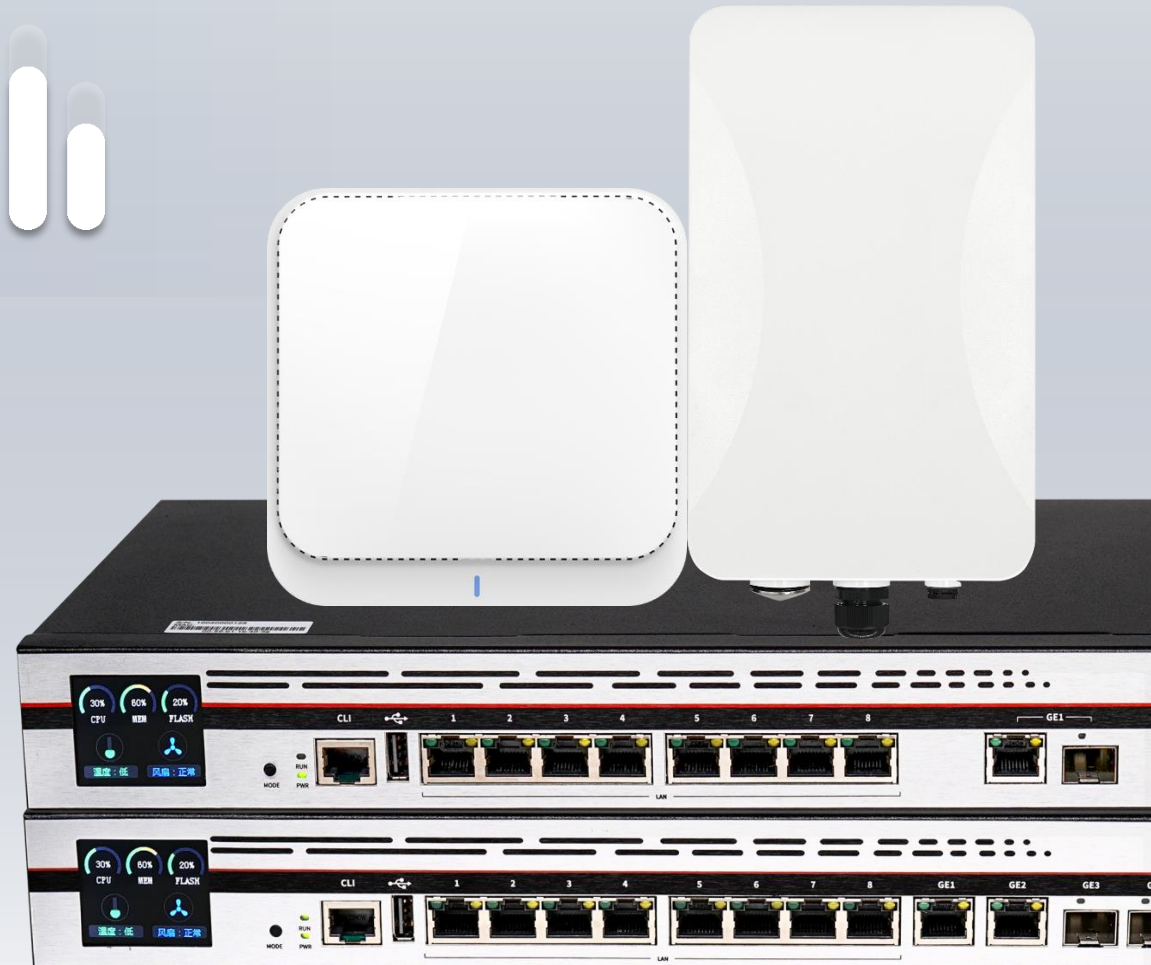


BDCOM Commercialized Router: No. 001
Access Certificate of MIIT, vendor partner of
Chinese Operators, multi-service supported.

◎Router series ◎BIG Converged Gateway

Provide users with full-scene, high-quality
wireless solutions.

◎WAP series ◎Wireless AC Series





Multi-service Router



Multi-service Router

- Multi-service supported
- IPv4/v6 dual stack
- Operator's centralized procurement specifications
- WAN modules such as serial port, E1.
- 4G/5G network access capabilities
- APN private network, VPN encryption, safe and reliable
- Centralized management in the cloud

Router series



Converged Gateway

- Router+switch+access controller+firewall+flow control all-in-one device, saving OPEX
- Multiple functions in one device, saving money.
- Few failure point, saving energy.
- LCD visual operation and cloud maintenance, saving time.



Converged Gateway

Wireless AP Series



Ceiling-mounted Wireless AP

- WiFi5/WiFi6 chip solutions
- High-density wireless coverage
- Stable connection
- Fully automatic seamless roaming

Outdoor Wireless AP

- High power and wide coverage
- Various antenna accessories
- Waterproof, dustproof, anti-thunder
- Built-in smart antenna

Wall-in Wireless AP

- Optimized antenna design
- Switchable LED
- Energy-saving

Wireless AC Series

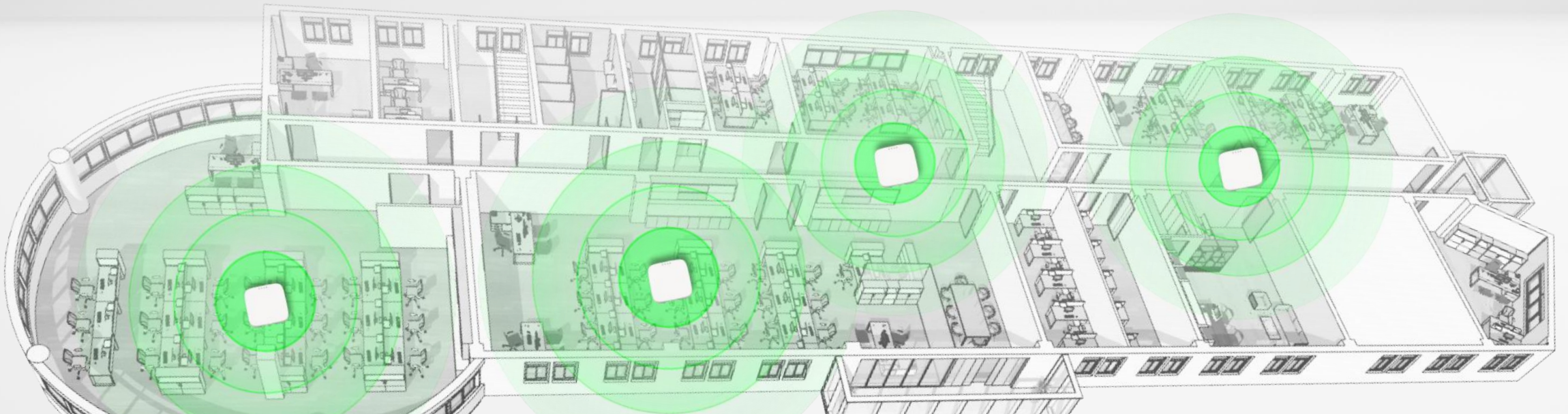
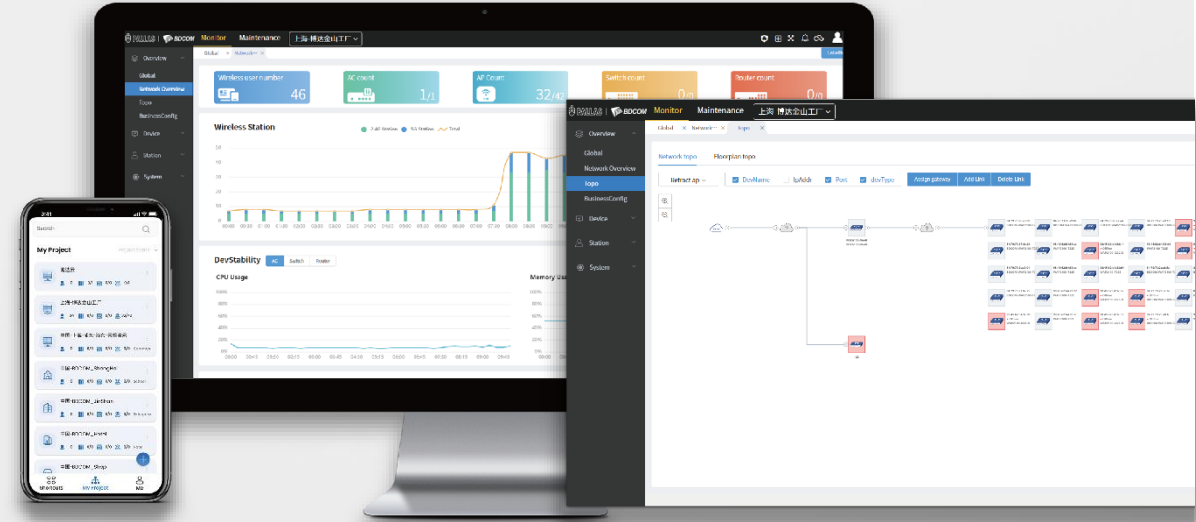
- Flexible network deployment
- Unaware mobile roaming experience
- Integration of routing, AC and authentication
- Easy-to-use cloud management and O&M





Pallas: Cloud-based Operating Platform

- ✔ Supports unified access of six product lines including router, switch, xPON, and wireless.
- ✔ Supports rapid deployment, device management, automatic topology-drawing, network operation and maintenance, log alarms, etc.
- ✔ Easy-to-operate web interface.
- ✔ Supports APP to control the network anytime, anywhere.
- ✔ Supports cloud, local, and cluster deployments.



03

Part



Sustainable business up to the value added for partners & customers

Application



Telecom



ISP



MSO



Manufacturing



Education



Energy



Healthcare



Retail



Transportation



Government



Hospitality

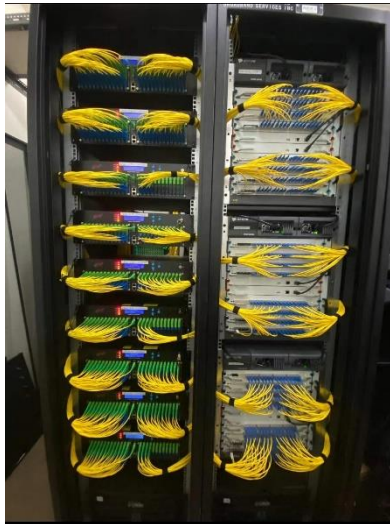


Finance

Service Provider

50000000
units running lively

100+
Countries



Partners >>

- Reliance
- Rostelecom
- BeeLine
- NT
- ETB
- MPT
- Planetcable
- Viettel
- BOL
- TIS
- COL
- LG U+
- KT
- SCTV
- BracNet
- Indosat
- Broadlink
- MTS
- Megfon
- Singtel
- DCTV
- Telkom
- Herotel
- Hyundai Telecom
- Globe telecom

Enterprise Network



Healthcare

Brazil Instituto De Olhos De Rondonia
Thailand Queen Sirikit National Institute
Bangladesh Popular Hospital
Islami Bank Foundation (IBF) Hospital

Government

Vietnam Cao Bang Provincial Museum
Nepal Chandragiri Municipal Corporation
Brazil São Caetano do Sul
Bangladesh BEPZA

Financial

Mumbai Stock Exchange
Singapore DBS Bank
Central Bank of Myanmar
Russia Sberbank
Russia Tax Bureau

Hospitality

Indonesia JHL 5 star Hotel
Vietnam Novotel 4-star hotel
Dhaka Sarina 4-star Hotel
InterContinental Doha
Hilton Hotels & Resort

Education

Singapore Ministry of Education
Busan Ministry of Education
University of Dhaka
Bangladesh CUET
Bangladesh Uttara University
India National Universities

Manufacturing

Sri Lanka Dipped Products PLC
Iraq Al SSAD
Bangladesh Noman Group
Bangladesh Pacific Jeans Group
Bangladesh PRAN-RFL

Transportation

New Delhi Metro Station
India West Zone Railway
Incheon International Airport
Bangladesh Saidpur Railway station

Energy

Indonesia PLN group
Philippine NGCP
Rupper Nuclear Power Plant
Barapukuria Coal-fired Power Plant
China National Grid

Retail

Philippines Acienda Outlet Mall
Cambodia AEON Mall 3
Wuhan New Beauties Fashion Plaza
Bangladesh Bashundhara City



Thank You



One-stop solution covering multiple lines & levels



Strong capacity of R&D and Manufacturing



Rich experience serving Partners & Customers