

TRANSFORMING THE WAY THE WORLD CONNECTS

2021 PRODUCT
CATALOGUE

CONTENTS

OPEN NETWORKING DATA CENTER AND CAMPUS.....	8
EDGECORE SONIC SOLUTIONS.....	10
400G	11
100G@ WEDGE SERIES.....	12
25G.....	13
10G.....	14
1G @ MULTI-RATE DATA CENTER @ CAMPUS EDGE.....	15
OPEN NETWORKING COMMUNICATION SERVICE PROVIDER.....	16
MOBILE BACKHAUL.....	17
PACKET OPTICAL NETWORKING.....	18
CORE AND AGGREGATION SWITCHING.....	19
BROADBAND ACCESS.....	20
NETWORK APPLIANCE.....	21
ENTERPRISE SWITCHES	22
LAYER 3.....	25
LAYER 2+ / L3 LITE 1G/10G.....	26
WEB-SMART PRO SWITCHES	28
WEB-SMART GE SWITCHES	29
INDUSTRIAL SWITCHES	30
ACCESSORIES AND CABLES	32
ENTERPRISE WIRELESS.....	34
WLAN GATEWAY-CONTROLLER.....	37
WIRELESS ACCESS POINT.....	37
NETWORK SOFTWARE	40
SUPPORT SERVICE	41
GREEN FRIENDLY	42



COMPANY PROFILE

Edgecore Networks Corporation is a wholly owned subsidiary of Accton Technology Corporation, the leading network ODM. Edgecore Networks delivers wired and wireless networking products and solutions from the edge to the core through channel partners and system integrators worldwide for the Data Center, Service Provider, Enterprise and SMB customers.

Edgecore provides a broad portfolio of OCP Accepted™ open hardware including cell site gateways, aggregation switches, core routers, broadband OLTs, and optical packet transponders for different applications and vertical markets. Edgecore is the leader in open networking solutions, and is a key contributor to the OCP, ONF, and TIP open communities. Edgecore open network solutions remove single vendor lock in and slow technology innovations from legacy network equipment providers by offering open hardware, commercial and open-source software to service providers and network operators to tackle constantly evolving network requirements.

Headquartered in the Hsinchu Science Park in northern Taiwan, Edgecore Networks was established in 2004 and formally spun-off in 2010 into an independent subsidiary responsible for the global branded business of the Accton Technology Group (www.accton.com) with a global presence in the US, UK, Poland, Russia, Turkey, Brazil, Korea, Singapore, Indonesia, India, and Australia.

VISION & MISSION


Within an ecosystem of commercial partners and open-source communities, Edgecore Networks delivers networking solutions based on open hardware and software platforms that increase choice, freedom, greater control, encourage and quicken innovation, lower TCO, and stimulate new business models. The underlying philosophy of Edgecore Networks is to provide professional wired and wireless solutions from the edge to the core.

We deliver industry-leading open networking hardware and software products for data centers, telecommunications service providers, managed service providers, and enterprises. A broad product portfolio spanning 400G/100G/25G/10G/2.5G/1G switching, enterprise-level wireless, and network management tools.

We shape the future of the Internet by creating unprecedented value and opportunity for our customers, investors, ecosystem partners and employees. We transform how people communicate and collaborate on a connected planet.



TRANSFORMING THE WAY THE WORLD CONNECTS

-  Communication Service Provider
-  Data Center
-  Enterprise Wired and Wireless
-  Network Appliance



OPEN NETWORKING DATA CENTER AND CAMPUS

Open networking solutions are based on open standard, bare-metal hardware with a choice of independent open software for commercial NOS (Network Operating Systems), Open Source Software SDN, virtualization, and cloud orchestration. For years, hyper-scale data center operators have been enjoying the benefits of open networking solutions: reduced network equipment expenses, automated and accelerated provisioning of network capacity and services, greater control over the development of enhanced network services, flexibility to work with best-in-class suppliers, and reduced operating expenses.

These open networking benefits are now available for many more networking use cases. Public and private cloud data centers of all sizes are being deployed with network fabric built from open leaf and spine switches. Edgecore Networks offers choices of hardware to meet open network deployment, from 1G, 10G, 25G and 40G, 100G to 400G.



Platinum Level Tiered Membership - Edgecore is OCP Platinum Level Tiered Membership.



Freedom of choice - Edgecore switches support the broadest set of commercial and open source software choices in the industry, providing customers with alternatives to meet their specific requirements.



Greater control - Greater control over the development of enhanced network services, flexibility to work with best-in-class suppliers.



Rapid innovation - Rapid innovation through community and DevOps approach.

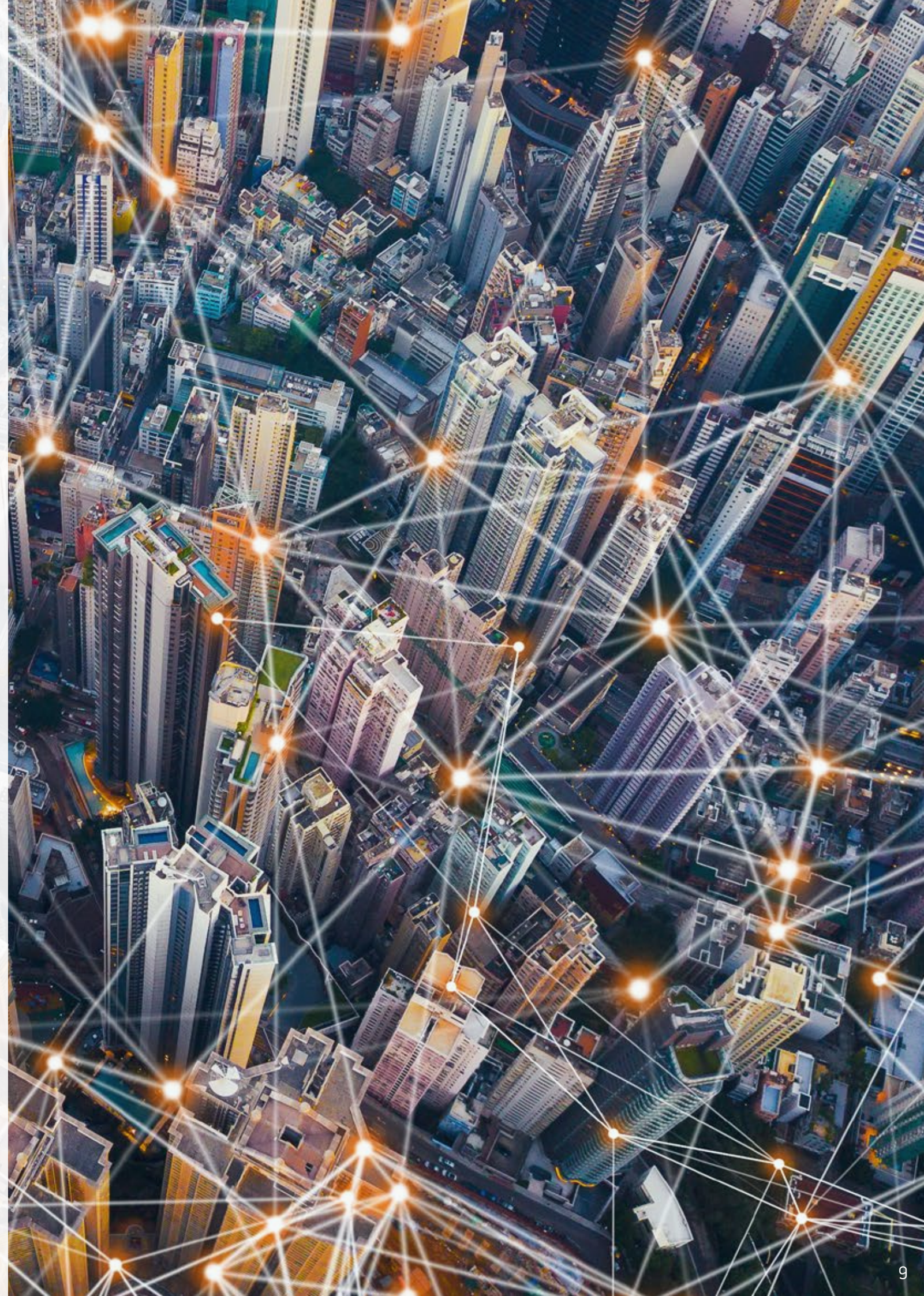
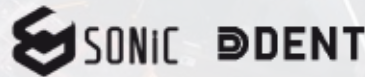


Reduced CAPEX and OPEX - Automated and accelerated provisioning of network capacity and services, these open network benefits are now available for many more network use cases, reduced network equipment expenses, and reduced operating expenses.

All Edgecore open network switches and routers support the Open Network Install Environment (ONIE) for automated loading of compatible Networking Operating Software. Various choices of commercial OS are available depending on use cases.



TELECOM INFRA PROJECT



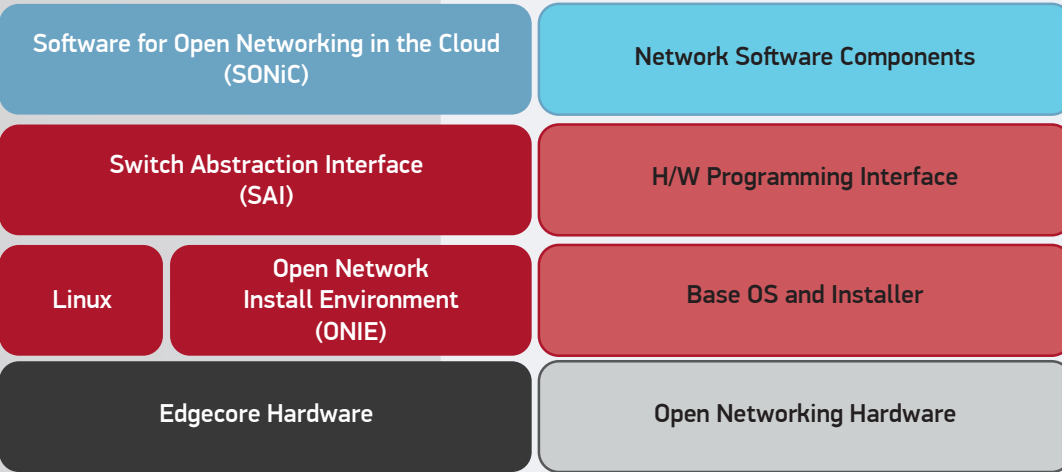
OPEN NETWORKING EDGE CORE SONiC SOLUTIONS



ENTERPRISE SONiC DISTRIBUTION BY EDGE CORE

Open, Production Ready & Commercially Deployable SONiC offering, enabling customers to fully realize the benefits of Open Networking.

SWITCH (HOST)

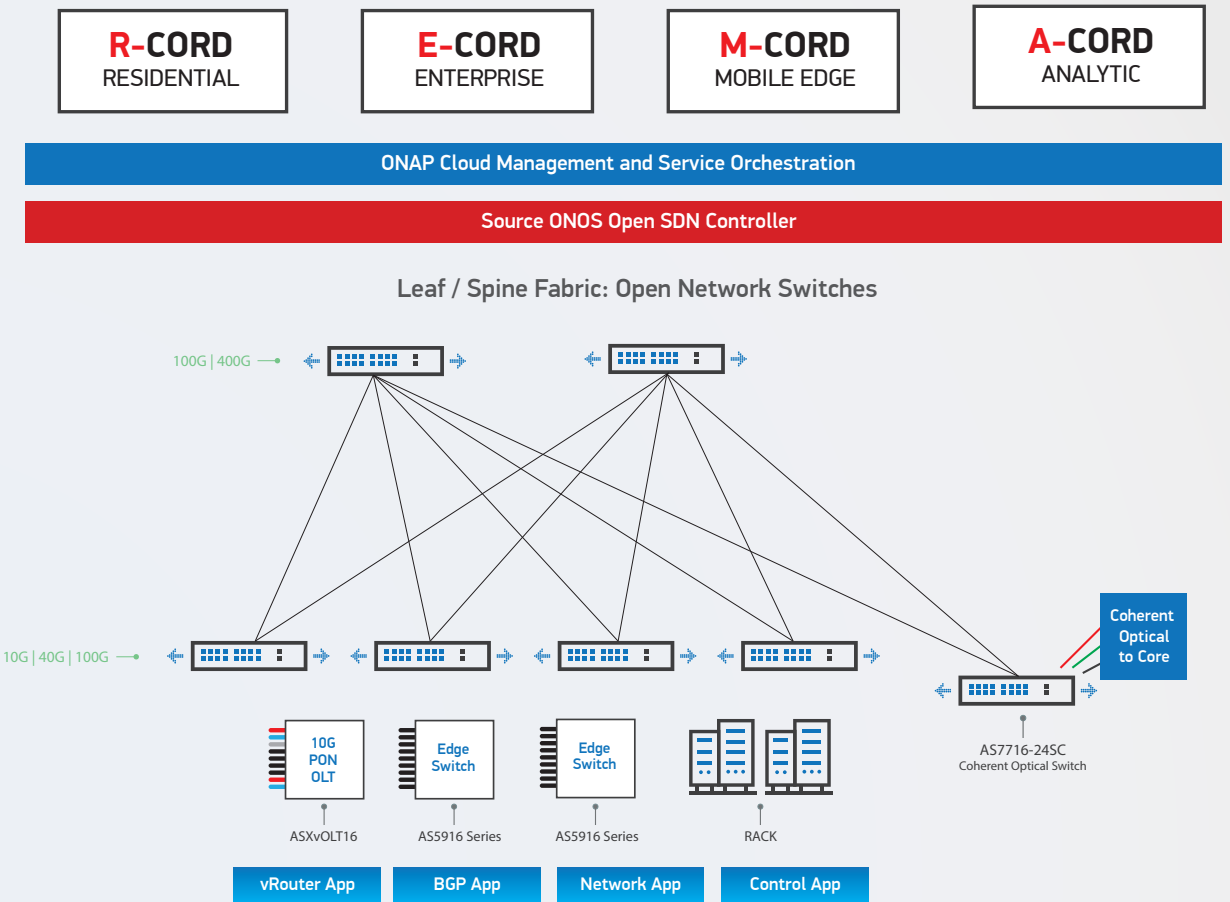


- Edgecore's Hardened & Supported version of SONiC
 - Derived from the Community SONiC distributions
 - Includes Edgecore enhancements & modifications
- Targeted to Data Center Use-Case Applications
- Supported on growing number of Edgecore Open Networking platforms 1G/10G/25G/100G/400G
- Integrations with third-party Orchestration solutions

Edgecore's SONiC Offering is Truly Open Source, Supported distro of SONiC



CORD:CENTRAL OFFICE RE-ARCHITECTED AS A DATACENTER



400G DATA CENTER

The industry's first 400G switch delivers the next level in bandwidth for webscale data center fabrics. The ideal choice for high-speed spine interconnection as bandwidth demand increases.

400G BARE-METAL HARDWARE

Spine Switch
32 x 400G Ports
Broadcom® XGS Tomahawk III
Intel Xeon D-1500 CPU
IEEE 1588 and SyncE Timing



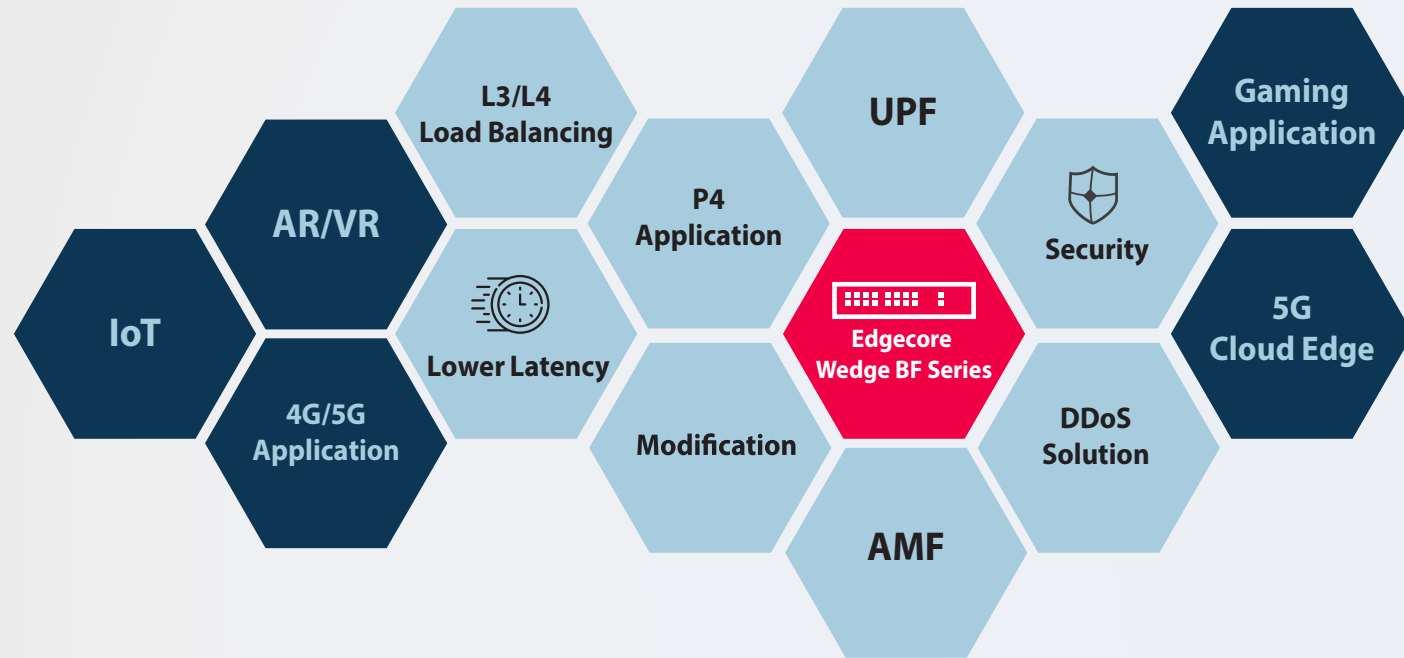
AS9716-32D
32 x 400G QSFP56-DD ports
Industry's First 400G Open Network Switch
Optimized for Spine Applications



OPEN NETWORKING DATA CENTER AND CAMPUS

100G WEDGE SERIES

A fully programmable switch based on Facebook's Wedge 100 design that enables network operators to increase flexibility and capacity with 25G and 100G networking.



WEDGE SERIES

P4 (Programmable) Pipeline
32 x 100G or 65 x 100G Ports
Intel Barefoot® Tofino
Intel Xeon D-1500



Wedge 100BF-65X
65 x 100G QSFP28 ports
Intel Barefoot Tofino, 4 Core CPU
4 Pipeline and P4 Programmable



Wedge 100BF-32X
32 x 100G QSFP28 ports
Intel Barefoot Tofino, 4 Core CPU



Wedge 100BF-32QS
32 x 100G QSFP28 ports
Intel Barefoot Tofino, 8 Core CPU
4 Pipeline and P4 Programmable

100G DATA CENTER

High-performance bare-metal data center switches for TOR and spine network deployment, providing a non-blocking fabric in flatter and scalable topologies.

100G OPEN MODULAR PLATFORM

Modular High Capacity Leaf/Spine Switch
Based on Facebook "Minipack" Design
128 x 100G
Broadcom® XGS Tomahawk III
Xeon D-1500 CPU
100G Line Card Option



Minipack-AS8000
128 x 100G QSFP28 ports
Next generation leaf/spine fabrics in CORD



LEAF/ SPINE SWITCH

Spine Switch
64 x 100G Ports
Broadcom® XGS Tomahawk II
Xeon D-1500 CPU



AS7816-64X
64 x 100G QSFP28 ports
Super Spine Network



Spine Switch
32 x 100G Ports
Broadcom® XGS Trident III
Xeon D-1500 CPU



AS7726-32X
32 x 100G QSFP28 ports
2 x 10G SFP+ ports
Enhance Buffer, Table Size



Spine Switch
32 x 100G Ports
Broadcom® XGS Tomahawk
Intel Atom Rangeley CPU



AS7712-32X
32 x 100G QSFP28 ports
First Open 100G Switch



25G DATA CENTER

High-performance TOR or spine data center switches, designed for computing clusters and high-frequency trading applications, supporting 10/25 GbE to servers with 40/100 GbE uplinks.

10G/25G Leaf Switch

Top of Rack Switch
48 x 25G, 8 x 100G, 2 x 10G Ports
Broadcom® XGS Trident III
Intel Xeon D-1500 CPU



AS7326-56X
48 x 25G SFP28 ports
8 x 100G QSFP28 ports, 2 x 10G



25G Leaf Switch

Top of Rack Switch
48 x 25G, 6 x 100G Ports
Broadcom® XGS Tomahawk+
Intel Atom Rangeley CPU



AS7312-54XS
48 x 25G SFP28 ports
6 x 100G QSFP28 ports

OPEN NETWORKING DATA CENTER AND CAMPUS

10G DATA CENTER

A full set of open 10GbE TOR switches based on OCP-accepted designs. Ideal for 10G downlinks to servers and uplinks to the spine

10G TOR DATA CENTER SWITCH

Top of Rack Switch
48 x 10G SFP+ or RJ45, 6 x 100G QSFP28
Broadcom® XGS Trident III
Intel Atom Denverton 4-Core 2GHz



AS5835-54X
48 x 10G SFP+ ports
6 x 100G QSFP+ ports
10G Platforms with Programmable Pipeline



AS5835-54T
48 x 10G Base-T ports
6 x 100G QSFP+ ports
10G Platforms with Programmable Pipeline

10G TOR DATA CENTER SWITCH

Top of Rack Switch
48 x 10G SFP+ or RJ45, 6 x 40G Ports
Broadcom® XGS Trident II+
Intel Atom Rangeley CPU



AS5812-54X
48 x 10G SFP+ ports
6 x 40G QSFP+ ports
Optimized 10G Top-of-Rack Fiber and Cooper switch



AS5812-54T
48 x 10G Base-T ports
6 x 40G QSFP+ ports
Optimized 10G Top-of-Rack Fiber and Cooper switch

10G DATA CENTER SWITCH

48 x 10G SFP+ ports
Supports front-to-back airflow
Load sharing, redundant AC PSUs
Marvel Solution, Class B Certified



AS5114-48X
48 x 10G SFP+ ports
Enterprise and Cloud Data Centers

1G AND MULTI-RATE DATA CENTER AND CAMPUS EDGE

A series of data center IPMI and enterprise campus switches. These platforms are ideal for out of band data center management networks as well as general campus edge connectivity. With options for high power POE, and Multi-Rate Ethernet the switches are purpose built for WiFi 6 Aps, security cameras and IOT devices.

1G CAMPUS SWITCH

Access Switch
48 x 1G, 4 x 25G, 2 x 100G
Broadcom® XGS Trident III
Intel ATOM Denverton CPU
Optional MACSEC
IEEE 802.3bt (90W) POE Support



AS4630-54PE
48 x 1G PoE ports
4 x 25G SFP28 ports
2 x 100G QSFP28 stacking ports



AS4630-54TE
48 x 1G Base-T ports
4 x 25G SFP28 ports
2 x 40/100G QSFP 28 ports
Optimized for IoT Devices

MULTI-RATE CAMPUS SWITCH

36 x 2.5G + 12 x 10G +
4 x 25G SFP28+ 2 x 100G QSFP28
Broadcom Trident III
Intel ATOM Denverton CPU
IEEE 802.3at/bt 90W PoE



AS4630-54NPE
36 x 2.5G Base-T + 12 x 10G Base-T ports
4 x 25G SFP28+, 2 x 100G QSFP28
High Power for Campus and Wireless Application

1G CAMPUS SWITCH

48 x 1G port + 4 x SFP+ ports
Supports front-to-back airflow
Load sharing, redundant AC PSUs.
(AS4224-52P only)
Marvel Solution, Class B Certified



AS4224-52P
48 x 10/100/1000 Base-T ports
4 x 10G SFP+ with PoE
Enterprise and Cloud Data Centers



AS4224-52T
48 x 10/100/1000 Base-T ports
4 x 10G SFP+ uplink ports
Enterprise and Cloud Data Centers

1G CAMPUS SWITCH

Access switch
24 or 48 Port 1G, 4x10G, 2x20G Stack Ports
Broadcom® XGS Helix 4
Embedded ARM CPU
POE and non-POE Options



AS4610-54P
48 x 1G PoE ports
4 x 10G SFP+ uplink ports
2 x 20G QSFP+ stacking ports



AS4610-54T
48 x 1G Base-T
4 x 10G SFP+ uplink ports
2 x 20G QSFP+ stacking ports



AS4610-30P
24 x 1G PoE ports
4 x 10G SFP+ uplink ports
2 x 20G QSFP+ stacking ports

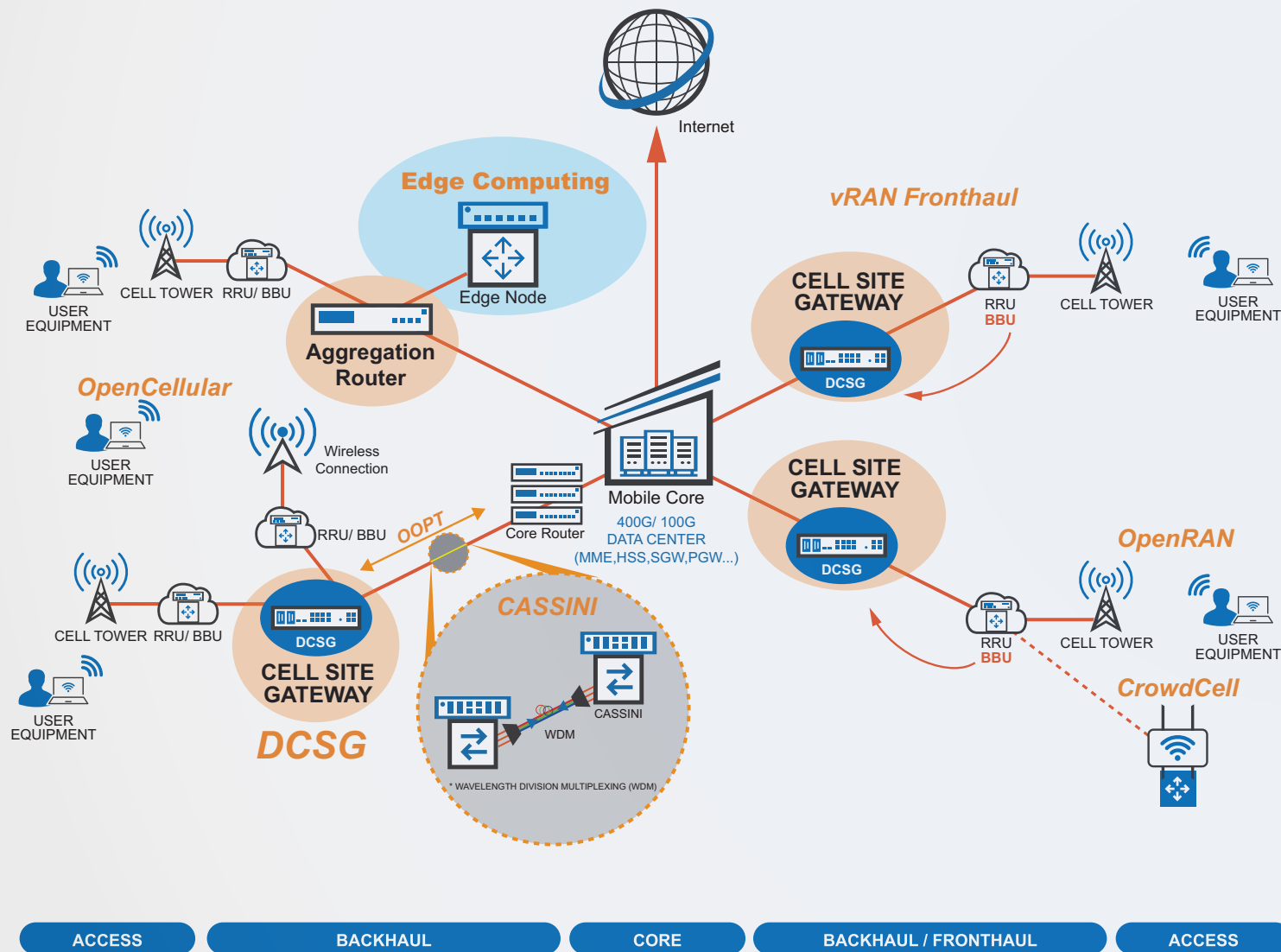


AS4610-30T
48 x 1G Base-T
4 x 10G SFP+ uplink ports
2 x 20G QSFP+ stacking ports

OPEN NETWORKING COMMUNICATION SERVICE PROVIDER

Edgecore provides a broad portfolio of OCP Accepted™ open hardware including cell site gateways, aggregation switches, core routers, broadband OLTs, and optical packet transponders for different applications and vertical markets. Edgecore is the leader in open networking solutions, and is a key contributor to the OCP, ONF, and TIP open communities. Edgecore open network solutions remove single vendor lock in and slow technology innovations from legacy network equipment providers by offering open hardware, commercial and open-source software to service providers and network operators to tackle constantly evolving network requirements..

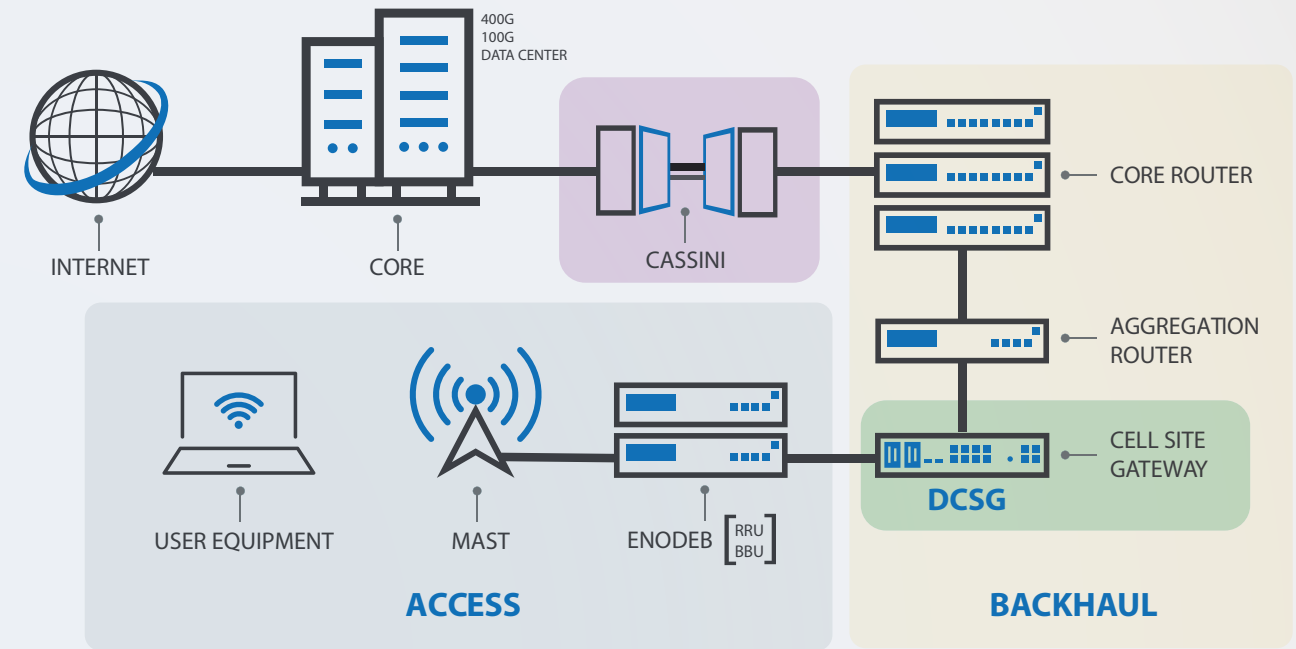
OPEN NETWORKING - CSP TOPOLOGY



MOBILE BACKHAUL

Disaggregated Cell Site Gateways (DCSG) based on an open and disaggregated architecture for existing 2G/3G/4G and future 5G mobile infrastructures.

DCSG NETWORK TOPOLOGY



TELECOM INFRA PROJECT

DISAGGREGATED CELL SITE GATEWAYS

Flexible 1G, 2.5G, 10G, 25G and 100G Port Configurations
Broadcom® DNX Qumran
Intel Xeon D-1500 or Intel Atom CPU Options
IEEE 1588 and SyncE
Temperature Hardened Design - wide operating temp

TELECOM INFRA PROJECT



AS5915-18X
6 x SFP+, 8 x SFP+
4 x 1G Base-T ports



AS7315-27X
20 x 1G / 10 G SFP+
4 x 1G / 10G / 25G SFP28
3 x 100G QSFP28 uplinks



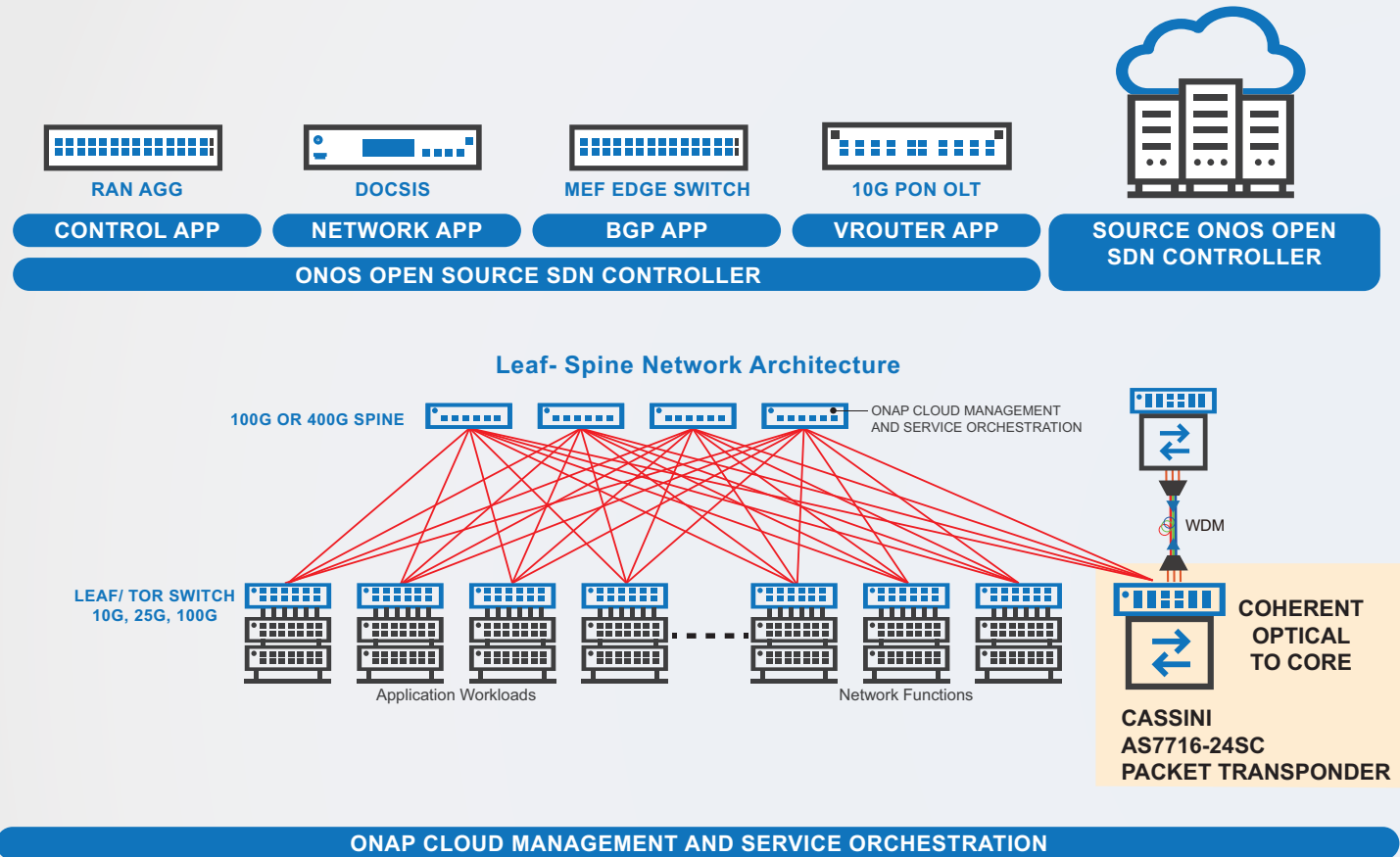
AS7316-26XB
16 x 10G SFP+
8 x 25G SFP28
2 x 100G QSFP28



OPEN NETWORKING COMMUNICATION SERVICE PROVIDER

PACKET OPTICAL NETWORKING

The industry's first modular open-source disaggregated open networking transponder contributed to TIP. Data center Interconnect with DCO coherent optics for long distance connectivity.



OPEN PACKET TRANSPONDER

Based on TIP Specification
16 x 100G, 8 Module Slots for DCO/QSFP28
Broadcom® XGS Tomahawk+
Intel® Xeon® D-1500 CPU



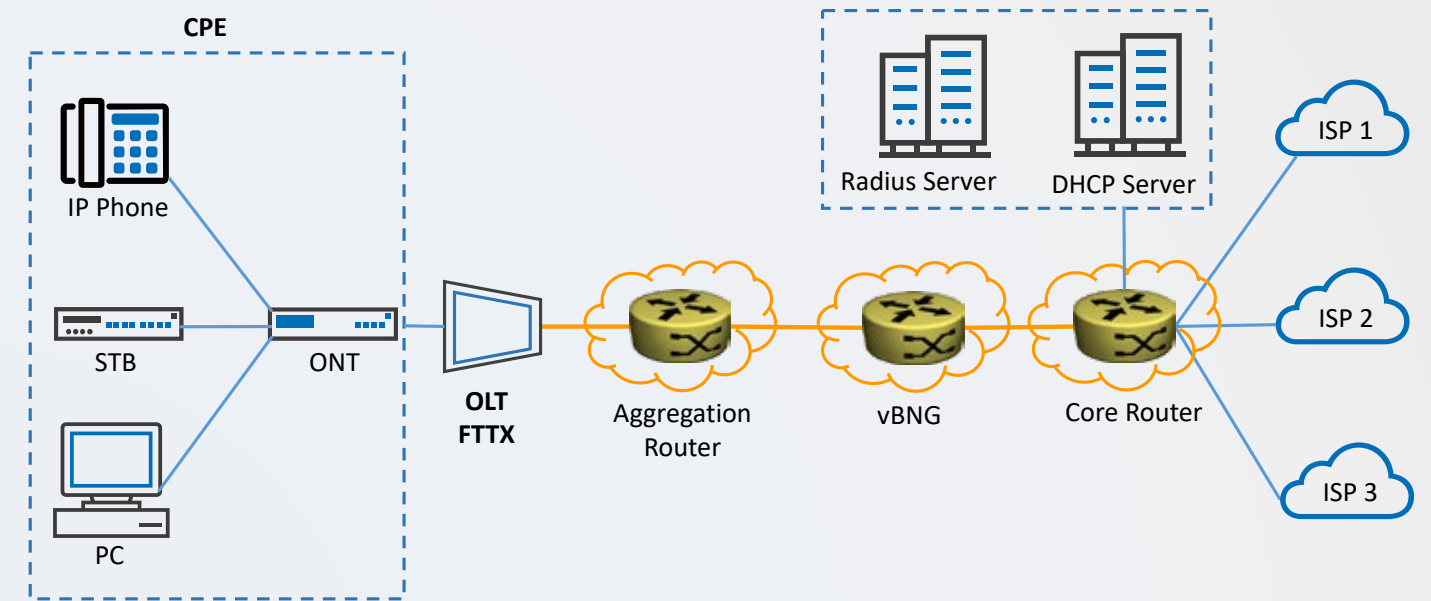
CASSINI AS7716-24SC
8 modules for 2 x 100G or 1x DCO
Long distance transmission



**BEST CHOICE
AWARD**

CORE AND AGGREGATION SWITCHING

Ethernet technology is broadly adopted in network operators' core and aggregation network architectures to enable various business services and deliver IP connectivity with the carrier-class performance, scalability, and security required in today's network environments. The access devices are aggregated into fewer connections for best transport to the operator's core network. Edgecore provides various options for core and aggregation network designs to enable network operators' growing broadband and transport network traffic.



AGGREGATION AND CORE ROUTERS

Edgecore's high-performance router platform with cell-based fabric interfaces is perfect for carrier, data center and transport networking applications. The system supports deep packet buffers and external TCAMs to provide massive routing scale and statistics gathering. The system are NEBS L3 compliant and support precise, IEEE 1588 and SyncE, and redundant power and cooling for maximum reliability.

400G ROUTER

Fabric Switch for Disaggregated Virtual Chassis
24 x 400G Ports
Broadcom® DNX Ramon
Intel® Xeon® Broadwell-DE, 8 cores CPU
IEEE1588 and SyncE



AS9926-24D
24 x 400G QSFP-DD Fabric Ports
Support fabric multicast and multicast load-balancing

High-performance Router for carrier networking, data center and packet transport applications

Service Provider Peering or Core Routers
40 x 100G, 13 x 400G
Broadcom® DNX Jericho 2
Deep Packet Buffer, External TCAM
Intel® Xeon® Broadwell-DE, 8 cores
IEEE 1588 and SyncE



AS7926-40XKF
40 x 100G QSFP28
13 x 400G QSFP-DD Fabric Ports

OPEN NETWORKING COMMUNICATION SERVICE PROVIDER

10G/100G EDGE ROUTER

48 x 10 G + 6 x 100 G
Broadcom® Qumran-MX
Intel® Rangeley C2538



AS5912-54X
48 x 10G SFP+ 6 x 100G QSFP28 ports
Top-of-Rack and Carrier Access
Aggregation Switch



10G/100G EDGE ROUTER

48 x 10G+ 6 x 100G
Broadcom® StrataDNX®
Intel® Xeon® D-1518



AS5916-54XKS
48 x 10G SFP+
6 x 100G QSFP28 ports



AS5916-54XL
48 x 10G SFP+
6 x 100G QSFP28 ports



AS5916-54XM
48 x 10G SFP+
6 x 100G QSFP28 ports

BROADBAND ACCESS

The industry's first disaggregated XGS-PON OLT, an OCP-approved design that conforms to AT&T's XGS-PON specification.

XGS-PON virtual Optical Line Terminal

Disaggregated XGS-PON Optical Line Terminal (OLT)
16x XGSPON, 4x 100G Ports
Broadcom® DNX Qumran-AX and "Maple" PON
Supported by ONF VOLTHA/SEBA



ASXvOLT16
16 x 10G XGS-PON/NG-PON2 ports
4 x 100G uplinks
CORD, SEBA, TRELIS



OCP Open GPON – 64 Port OLT

64 x GPON SFP Ports, 2 x 100G QSFP28+
Disaggregated GPON Optical Line Terminal (OLT)
Broadcom® StrataDNX Qumran-AX, Maple silicon

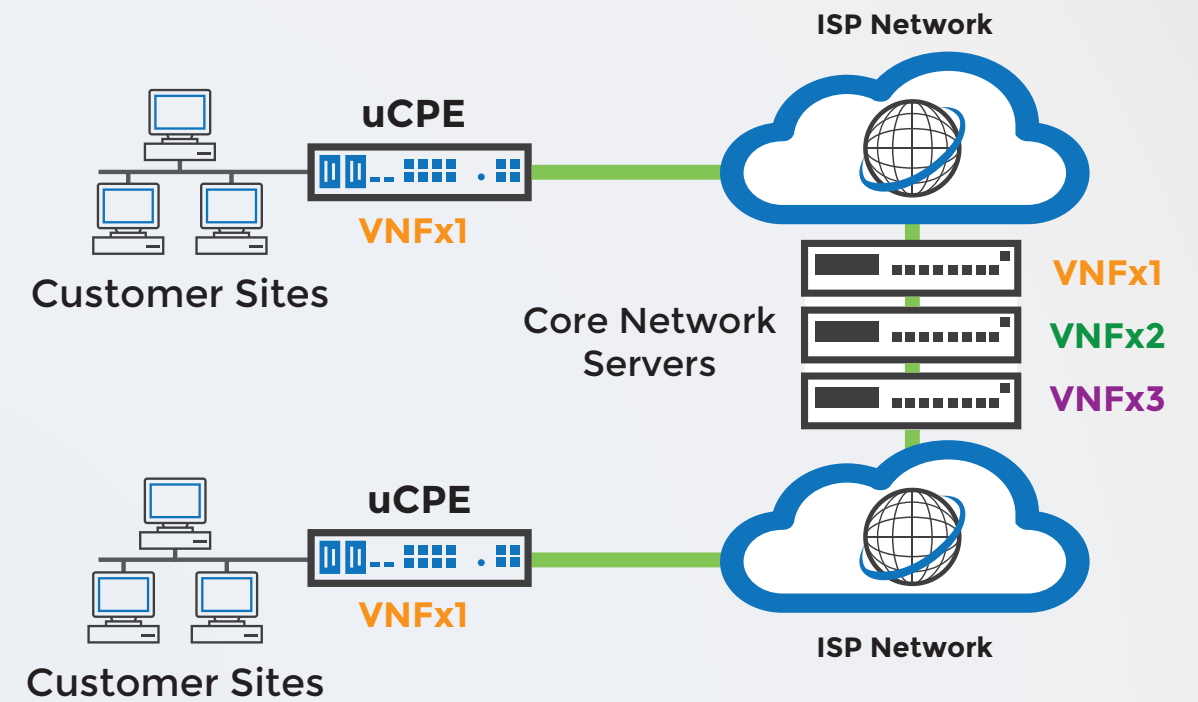


ASGvOLT64
2 x 100G QSFP28
8 x 10G / 25G SFP28 uplinks
CORD, SEBA, TRELIS

NETWORK APPLIANCE

Universal Customer Premise Equipment (uCPE) utilizes standard Intel®x86 architecture for openness and flexibility. The platform supports compatible NFVI or third-party VNFs that enable service providers to deliver innovative services with agility and scalability.

uCPE TOPOLOGY



UNIVERSAL CPE (uCPE) PLATFORM

Integrates WAN, LAN, and VNFs
Intel Atom® Intel Processor
DDR4 Memory
HDD / SSD options
1G RJ45, 1G SFP / 10G SFP+



SAF41011
Intel Xeon D-1517 SoC
2 x DDR4 SODIMM slots (max 32GB)
Default 8GB
1 x 1G RJ-45, 1 x SFP, 1 x SFP+,
8 x RJ-45 with 4x POE GbE port
1 x M.2 SATA SSD (Default 32GB)
1 RU; 1+1 Redundant PSU AC



SAF510031
Intel Atom® Processor C3000 Series
2 x DDR4 SODIMM slots (max 32GB)
2 x GbE and 8 x GbE Ports
1 x 2.5" SATA HDD(500G)



SAF510151
Intel Atom® Processor C3000 Series
4 x 10GE SFP, 4x 1GE RJ45 and
4 x 1GE RJ45 ports
16GB DDR4 DRAM
128GB SATA3

ENTERPRISE SWITCHES ENTERPRISE SOLUTIONS

Edgecore Networks provides a full range of managed switches to fulfill different deployment requirements, from small/medium business users, enterprise to carrier-level service providers, from simple web-smart switches to Layer 2, Layer 3, and industrial switches. Different products come with different port combinations, as well as PoE options, to meet market requirements with an emphasis on scalability and flexibility. Most importantly, managed switches all come with Edgecore Networks' in-house developed EdgeCOS™ software.

EdgeCOS™ **Embedded in-house operating system** – Provide flexible software customization, service and support.



Environment-friendly design, Energy-Efficient Ethernet (EEE) - Cut your operating expenses and save mother earth.



Highly reliable hardware design - With 20+ years' experience and a high reputation in the networking field, Edgecore Networks insists on investing in networking technology to provide the best products to its customers.



High performance / affordable - Provide the best cost-performance products, leveraging Accton's design and manufacturing power.

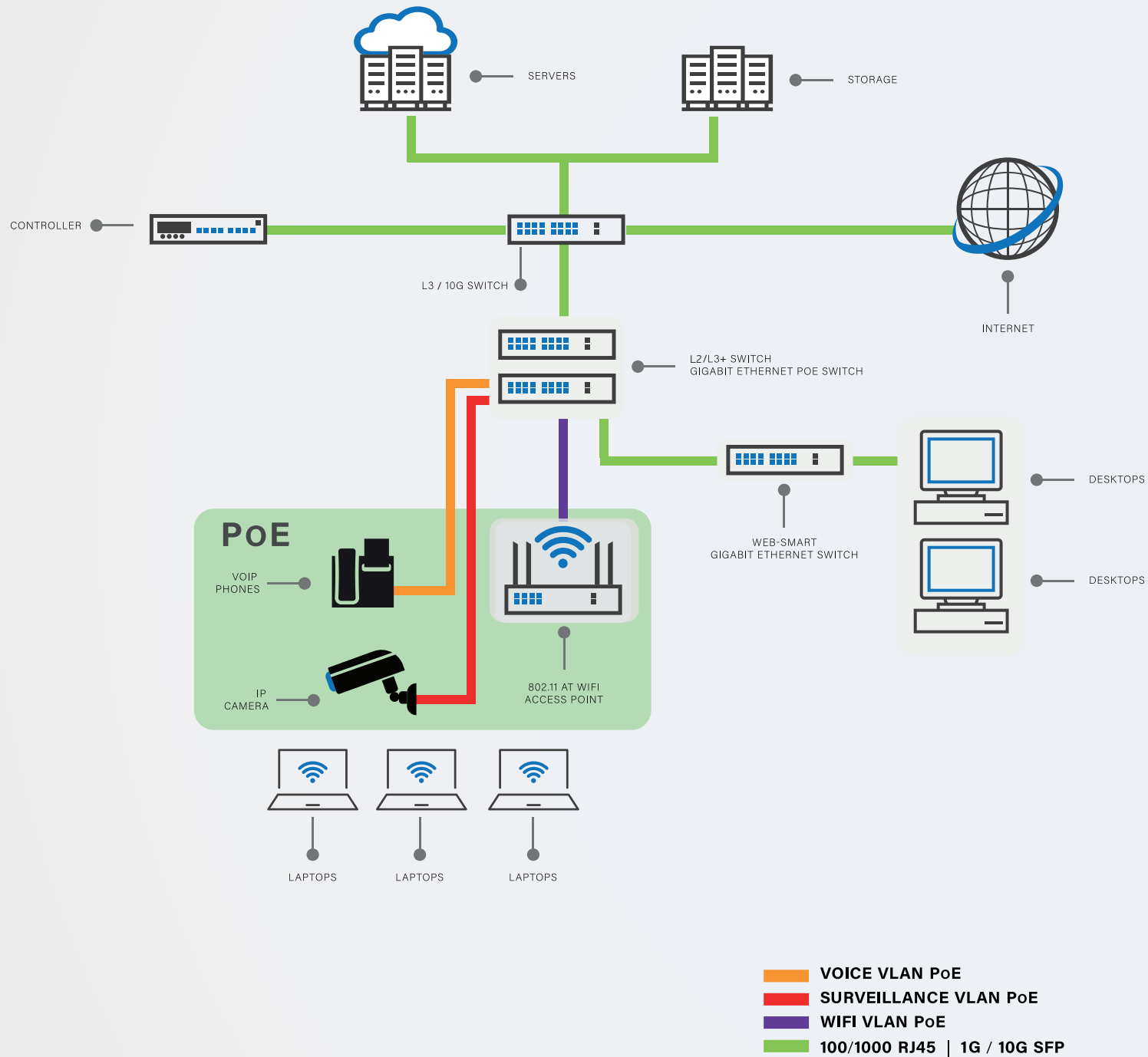


Rich L2/L3 features - Rich L2/L3 features for triple-play and multicast control (IGMP Snooping, MVR, QoS), security, and management



ENTERPRISE SWITCHES ENTERPRISE SOLUTIONS

NETWORK TOPOLOGY (POE SOLUTIONS)



LAYER 3

L3 switches is designed for enterprise distribution and ISP aggregation to connect the access switch together. High performance hardware based L2 switching and L3 routing for both IPv4 and IPv6 traffic. VRRP were supported for router redundancy. Also, support hardware stacking via 10G SFP+ port and DAC cable, no special stacking module and stacking cable are needed. Multiple switches within the stack can be managed as a single entity with a single IP address, the configuration and firmware can be automatically synchronized.

100G L3 SWITCH WITH SDN CAPABILITY

Full L2/L3 features
 Dual hot-swappable AC power modules for redundancy
 Optional DC power modules
 Hot-swappable Fan modules
 L3 OSFPv2/v3, BGP with ECMP
 Policy based routing
 VxLAN, MLAG
 VRRP, DHCP relay, DHCP server



AS7712-32X-EC
 32 x 100G QSFP28 ports
 ISP, Enterprise, Campus Aggregation Switch

10G L3 ETHERNET AGGREGATION / TOR SWITCH

L2+/ Lite L3 features with static route
 48x10G SFP+, 6 x 100G QSFP+ uplinks
 Dual hot-swappable AC power modules for redundancy
 Optional DC power modules Hot-swappable Fan modules
 VxLAN, MLAG



AS5835-54X-EC
 48 x 10G SFP+
 6 x 100G QSFP+
 10G Platforms

10G L3 ETHERNET AGGREGATION / TOR SWITCH

Full L2/L3 features
 48x10G SFP+, 6x40G QSFP+ uplinks
 Dual hot-swappable AC power modules for redundancy
 Optional DC power modules
 Hot-swappable Fan modules
 L3 OSFPv2/v3, BGP with ECMP
 Policy based routing
 VxLAN, MLAG
 VRRP, DHCP relay, DHCP server



AS5812-54X-EC
 48 x 10G SFP+/10G BASE-T
 6 x 40G QSFP+ ports
 ISP, Enterprise,
 Campus Aggregation Switch



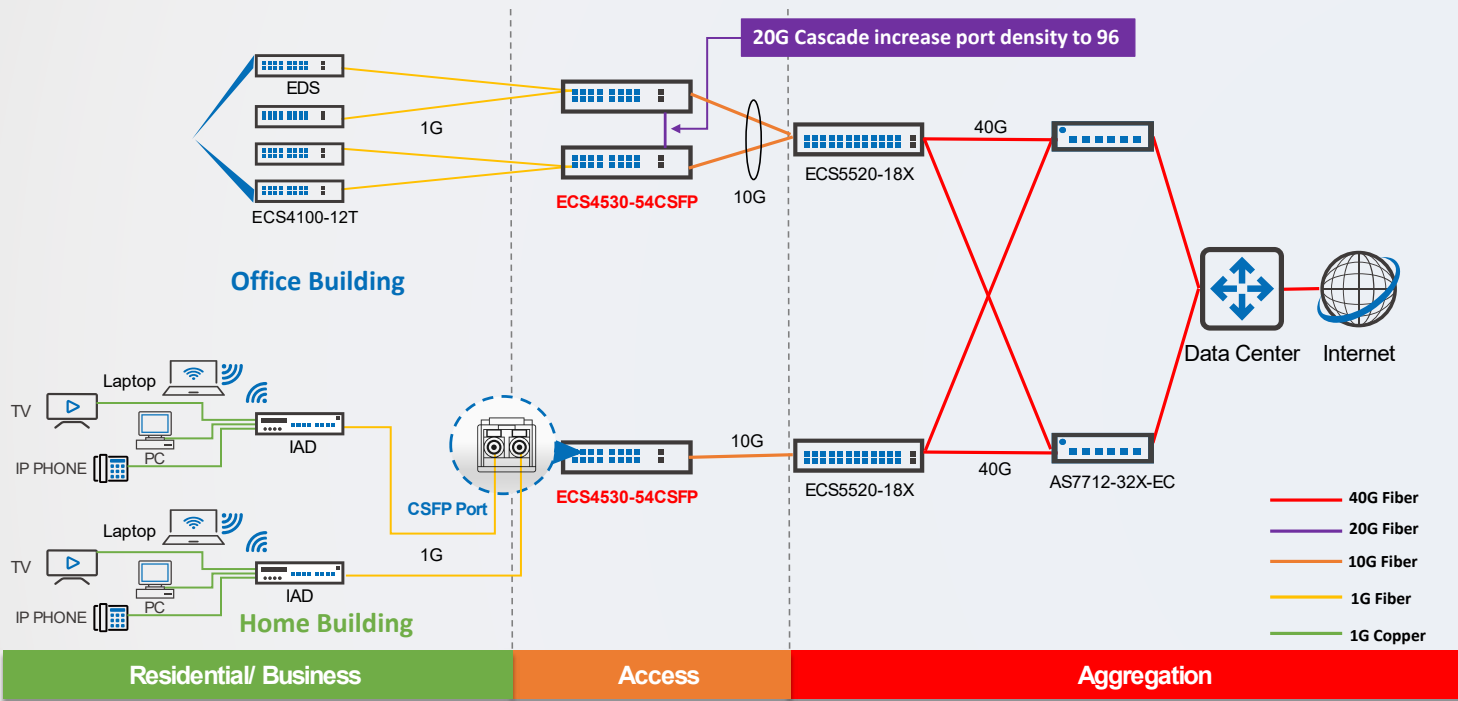
AS5812-54T-EC
 48 x 10G SFP+/10G BASE-T
 6 x 40G QSFP+ ports
 ISP, Enterprise, Campus
 Aggregation Switch

ENTERPRISE SWITCHES ENTERPRISE SOLUTIONS

LAYER 2+ / L3 LITE 1G/10G

Edgecore provides best cost performance L2+/L3 Lite Access/Aggregation switches, helping ISP, MSO worldwide building Fiber to the Building (FTTB), Fiber to the Home (FTTH) infrastructure to provide home users and business users with internet access, IPTV, VoIP, home automation, WiFi hotspot etc services. Edgecore L2+/L3 Lite Access/Aggregation switches are also ideal for SMB, enterprise, campus networks. The PoE switches provide up to 30W for VoIP phones, Wireless access point, and Surveillance camera. The high power model even supports up to 60W for some PTZ, infrared surveillance camera which required higher power.

HIGH PORT DENSITY FTTx ACCESS/MULTI DWELLING SWITCH FOR ISP



EDS: Enterprise Demarcation Switch
IAD: Integrated Access Device

L2+/ LITE 3 AGGREGATION SWITCH

Compact Cost-optimized 10G Aggregation Switch
Optional 2nd AC power for redundancy
Optional DC Power module
Metro features ERPS, QinQ, Selective QinQ, MLAG



ECS5520-18X
16 x 10G SFP+
2 x 40G QSFP+
ISP/Enterprise/SMB
Aggregation Switch



ECS5520-18T
16 x 10G Base-T
2 x 40G QSFP+
ISP/Enterprise/SMB
Aggregation Switch

10G L3 ETHERNET AGGREGATION TOR SWITCH

Full L3 stackable switch
24/48 GE+ 2x10G SFP+ + 1 slot
22 SFP+ 2 CG + 2x10G SFP+ + 1 slot
Optional 2x10G SFP+ module
Optional DC model (ECS4620-28T-DC & ECS4620-28F-DC)
2 AC model (ECS4620-28F-2AC)
Metro features ERPS, QinQ, Selective QinQ, 802.1ag, Y.1731
RIPv1/v2, OSFPv2/v3, BGP, PIM-DM/SM/DM6/SM6
VRRP, DHCP relay, DHCP server



ECS4620-28T
24 x 10/100/1000 Base-T
2 x 10G SFP+
AC or DC model



ECS4620-28P (410W)
24 x 10/100/1000 Base-T PoE
2 x 10G SFP+



ECS4620-28F
22 x 100/1000 Base-X
2 x Gigabit Combo (RJ45/SFP)
2 x 10G SFP+
AC or DC model



ECS4620-52T
48 x 10/100/1000 Base-T
2 x 10G SFP+



ECS4620-52P (780W)
48 x 10/100/1000 Base-T PoE
2 x 10G SFP+

HIGH DENSITY GIGABIT ETHERNET FTTx SWITCH

L2/Lite L3 features with static route
Adopts Innovative Compact SFP
(dual bidi ports) technology
Metro features ERPS, QinQ, Selective QinQ
Advanced and robust multicast control for IPTV
service MLAG



ECS4530-54CSFP
22 x CSFP + 2 CSFP/4 RJ45 combo
4 x 10G SFP+ , 2 x 20G QSFP+
0°C to 50°C



ECS4530-54CSFP-D-I
22 x CSFP + 2 CSFP/4 RJ45 combo
4 x 10G SFP+ , 2 x 20G QSFP+
0°C to 60°C, DC model

BEST COST PERFORMANCE L2+ / LITE L3 ENTERPRISE ACCESS SWITCH WITH 10G UPLINKS

L2+ / Lite L3 with static route, RIPv1/v2,
DHCP server Metro features ERPS,
QinQ, Selective QinQ, 802.1ag, Y.1731
24 GE + 4 x 10G SFP+
Compact form factor, Fan-less



ECS4130-28T
24 x 10/100/1000 Base-T
4 x 10G SFP+
AC or DC model



ECS4120-28T
24 x 10/100/1000 Base-T
4 x 10G SFP+



ECS4120-28Fv2
20 x 100/1000 Base-X
4 x 1G Combo (RJ45 / SFP)
4 x 10G SFP+
Dual power input (AC/DC)



ECS4120-28Fv2-I
20 x 100/1000 Base-X
4 x 1G Combo (RJ45 / SFP)
4 x 10G SFP+
Dual power input (AC/DC)
-10°C ~65°C



ECS4120-52T
48 x 10/100/1000 Base-T
4 x 10G SFP+

ENTERPRISE ACCESS SWITCH WITH 10G UPLINKS

24/48 GE+ 4x10G SFP+
20xSFP+, 4CG + 4x10G SFP+
DDM for downlink SFP and
uplink SFP+ ports
L2+/Lite L3 features with static route,
RIPv1/v2, DHCP server
Metro features ERPS, QinQ, Selective QinQ,
802.1ag, Y.1731

ENTERPRISE SWITCHES ENTERPRISE SOLUTIONS

L2+ / L3 LITE GIGABIT ETHERNET MANAGED SWITCH

8GE+ 2CG+ 2 SFP, 24/48 GE + 4 SFP,
PoE and without PoE, 24GE+ 4CG
60W 803.3bt PoE (ECS4100-12PH)
L2+/Lite L3 features with static route, RIPv1/v2, DHCP server
Metro features ERPS, QinQ, Selective QinQ, 802.1ag, Y.1731
Advanced and robust multicast control for IPTV service



ECS4100-12PH (180W)
8 x 10/100/1000 Base-T ports
with PoE
2 x Gigabit SFP
2 x Combo ports



ECS4100-28T
24 x 10/100/1000 Base-T ports
4 x Gigabit SFP



ECS4100-28TC
24 x 10/100/1000 Base-T ports
4 x Combo ports



ECS4100-28P (190W)
24 x 10/100/1000 Base-T ports
with PoE
4 x Gigabit SFP



ECS4100-52T
48 x 10/100/1000 Base-T ports
4 x Gigabit SFP



ECS4100-52P (370W)
48 x 10/100/1000 Base-T ports
with PoE
4 x Gigabit SFP



ECS4100-12T
8 x 10/100/1000 Base-T ports
2 x Gigabit SFP
2 x Combo ports

WEB-SMART PRO SWITCHES

The Web-Smart Pro series of Gigabit Ethernet (GE) switches with Power over Ethernet (PoE) options is designed for enterprise markets and provides a complete solution from 1G to 10G. As well as IPv4 and IPv6 features, the Web-Smart Pro series supports L3 static routing, QinQ, mDNS and IP Clustering.



ECS2100-10T
8 x 10/100/1000 Base-T ports
2 x Gigabit SFP



ECS2100-28T
24 x 10/100/1000 Base-T ports
4 x Gigabit SFP



ECS2100-52T
48 x 10/100/1000 Base-T ports
4 x Gigabit SFP

L2/L2+ GIGABIT ETHERNET MANAGED SWITCH

Comprehensive Security Features
CLI / SNMP / Web / Telnet Management Options
Dual firmware / configuration
RIP and Static Routing
Support 1G solution

L2/L2+ GIGABIT ETHERNET MANAGED POE SWITCH

Comprehensive Security Features
CLI / SNMP / Web / Telnet Management Options
Dual firmware / configuration
RIP and Static Routing
Full High Power POE Options (65W to 370W)



ECS2100-10P(125W)
8 x 10/100/1000 Base-T ports
2 x SFP (100/1000 Mbps)
uplink ports
8 x PoE Ports



ECS2100-10PE (65W)
8 x 10/100/1000 Base-T ports
2 x SFP (100/1000 Mbps)
uplink ports
8 x PoE Ports



ECS2100-28P (200W)
24 x 10/100/1000 Base-T ports
4 x SFP (100/1000 Mbps)
uplink ports
24 x PoE Ports



ECS2100-28PP (370W)
24 x 10/100/1000 Base-T ports
4 x SFP (100/1000 Mbps)
uplink ports
24 x PoE Ports

WEB-SMART GE SWITCHES

The Web-Smart series is designed for SMB markets and provides a complete solution with 10/28-ports, including both non-PoE and PoE options. The switches comply with the IEEE 802.3az Energy Efficient Ethernet standard. Support for IPv4 and IPv6. This series offers complete PoE solutions from 70W to 190 W.



ECS2020-10T
8 x 10/100/1000 Base-T ports
2 x SFP (100/1000 Mbps)
uplink ports



ECS2020-10P (65W)
8 x 10/100/1000 Base-T ports
2 x SFP (100/1000 Mbps)
uplink ports
8 x PoE ports

L2/L2+ GIGABIT ETHERNET MANAGED SWITCH

CLI / SNMP / Web / Telnet Management Options
Full High Power POE Options (65W to 190W)
4KV Surge Protection
Dual configuration
IPv4/IPv6
0°C to 50°C



ECS2020-28T
24 x 10/100/1000 Base-T ports
4 x SFP (100/1000 Mbps)
uplink ports

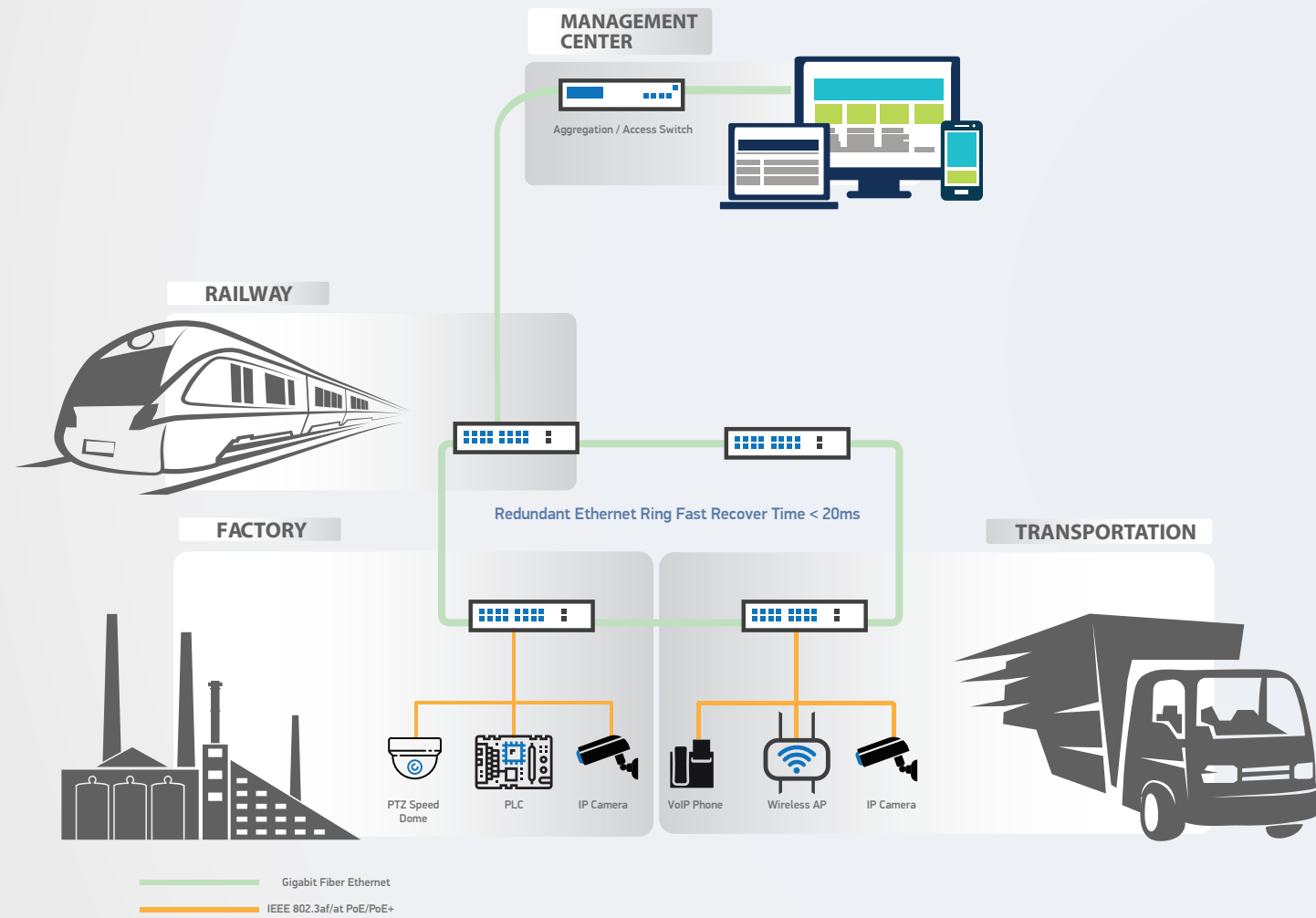


ECS2020-28P (190W)
24 x 10/100/1000 Base-T ports
4 x SFP (100/1000 Mbps)
uplink ports
24 x PoE ports

INDUSTRIAL SWITCHES

The ECIS4500 series are managed industrial PoE and non-PoE Gigabit Ethernet switches with hardened operating temperature designs. The PoE switches can power any IEEE 802.3af/at-compliant PoE PD devices and include PoE power management features that ease the deployment effort.

INDUSTRIAL SWITCHES NETWORK TOPOLOGY

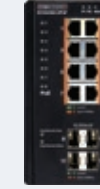


FULL GIGABIT INDUSTRIAL ETHERNET SWITCH

Industrial Hardened Design
 Continuous Availability
 Power over Ethernet for network applications
 Support Layer 2, security and management features
 Superior Quality. 100% Made In Taiwan



ECIS4500-8P2T4F
 8 x 100/1000 Base-T PoE
 2 x 100/1000 Base-T ports
 4 x 100/1000 Base-X SFP ports
 1 x RJ45 Console ports



ECIS4500-8P4F
 8 x 100/1000 Base-T PoE
 4 x 100/1000 Base-X SFP ports
 1 x RJ45 Console ports



ECIS4500-4P2T2F
 4 x 100/1000 Base-T PoE
 2 x 100/1000 Base-T ports
 2 x 100/1000 Base-X SFP ports
 1 x RJ45 Console ports



ECIS4500-4P4T
 4 x 100/1000 Base-T PoE
 4 x 100/1000 Base-T ports
 1 x RJ45 Console ports



ECIS4500-6T4F
 6 x 100/1000 Base-T
 4 x 100/1000 Base-X SFP ports
 1 x RJ45 Console ports



ECIS4500-6T2F
 6 x 100/1000 Base-T
 2 x 100/1000 Base-X SFP ports
 1 x RJ45 Console ports



ECIS4500-8T2F
 8 x 100/1000 Base-T
 2 x 100/1000 Base-X SFP ports
 1 x RJ45 Console ports

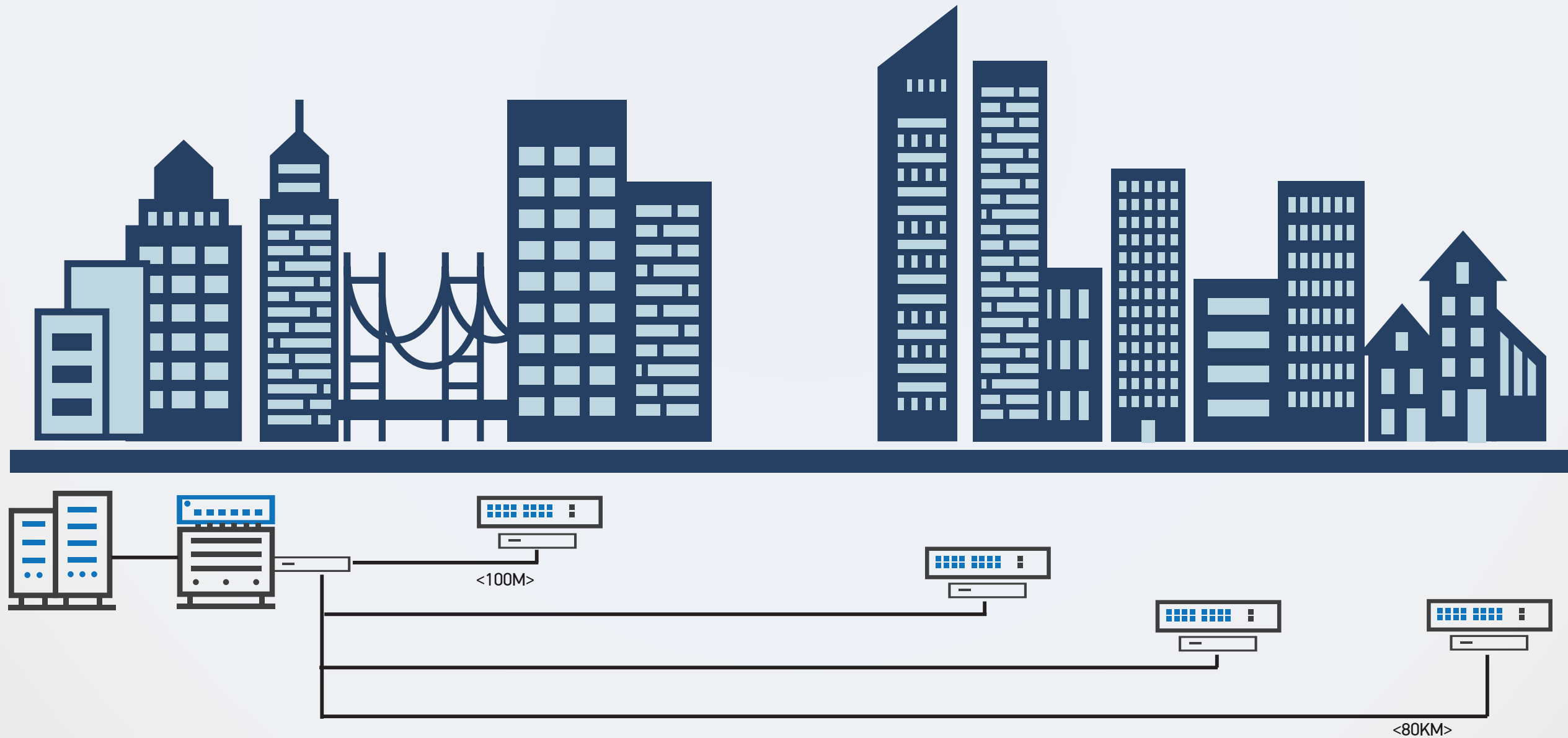
ACCESSORIES AND CABLES

TRANSCEIVERS PLUGGABLE OPTICS

Edgecore Networks pluggable optical modules provide fiber and copper connectivity over our entire range of products. With the flexibility to expand by media type (copper/fiber), speed (Fast Ethernet, Gigabit Ethernet, or 10/25/40/100/400 Gigabit Ethernet), and distance (100 m to 80 km). A wide choice of SFP, SFP+, SFP28, QSFP+, QSFP28 and QSFP-DD pluggable modules.

SFP TRANSCEIVER

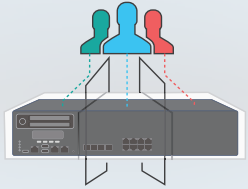
- 1G SFP
- 10G SFP+
- 25G SFP28
- 40G QSFP+
- 100G QSFP28
- 400G QSFP-DD



ENTERPRISE WIRELESS WIRELESS SOLUTIONS

Be connected on the move with high-bandwidth. With fast growing on the smart phone and tablets, people are always looking for high-bandwidth access to share their photo/video on the move. Reliable and fast Wi-Fi became essential and cost-effective infrastructure on different indoor and outdoor environment.

Focusing on enterprise, campus, and hospitality markets, Edgecore Networks offers integrated Wi-Fi solutions for complex Wi-Fi environments, ensuring a high-performance, flexible, and cost-effective wireless experience. With integrated security, social media insights, and hotspot billing, Edgecore's solutions empower businesses with new opportunities for value-added services and Wi-Fi monetization.



Flexible Deployment
Architectures



Wi-Fi Management
& Optimization



User Access &
Bandwidth Control

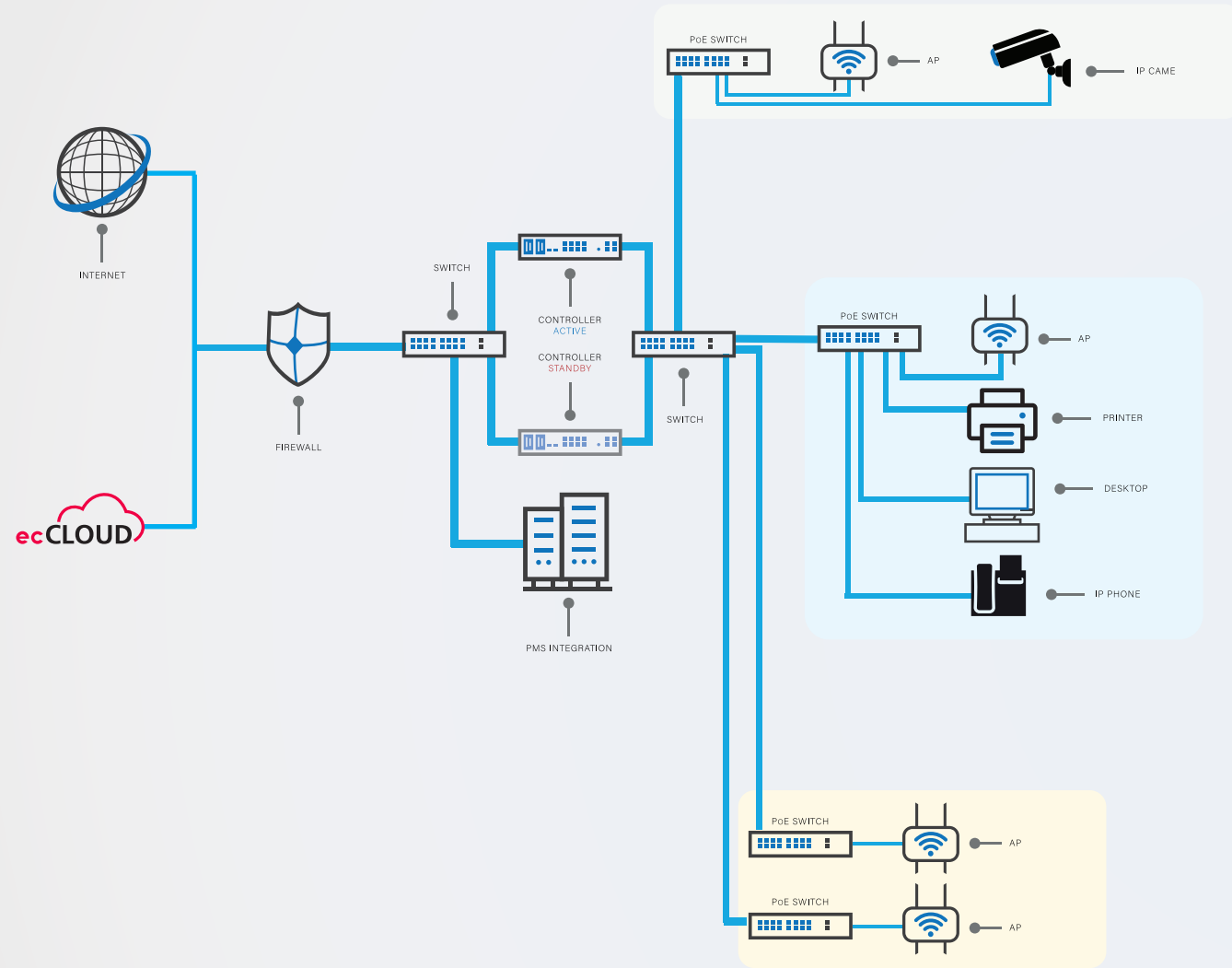


Guest Wi-Fi with
Social Media Login



ENTERPRISE WIRELESS WIRELESS SOLUTIONS

WIFI NETWORK TOPOLOGY



RECOMMENDED SCENARIOS



WLAN GATEWAY-CONTROLLER

The Edgecore WLAN gateway-controller is designed as an all-in-one platform for public and enterprise Wi-Fi. Hotels, universities, and even complete municipalities will find that the flexibility and simplicity provided by the gateway-controller breaks down TCO barriers and enables unparalleled ROI.



EWS101
Support up to 50 APs



EWS5203
Support up to 300 APs



EWS5204
Support up to 1,000 APs



EWS5207
Support up to 3,000 APs



EWS1000
Support up to 10,000 APs

WIRELESS LAN CONTROLLER

AP management + Gateway function
N+1 Redundancy & WAN Load balance/Failover
Customizable Captive Portal with Multi-Tenancy
AP Performance Optimization
Completed User Access Control
Manage 300AP / 1000 AP / 3000 AP / 10000 AP

WIRELESS ACCESS POINT

Edgecore's portfolio of indoor and outdoor wireless access points utilize the latest in Wi-Fi standards and technology for all types of deployments, ensuring an optimal Wi-Fi experience. With centralized management, advanced QoS features, and enterprise-grade security, Edgecore helps organizations minimize both risks and costs.



ECW5211-L
Indoor Dual Radio,
2x2:2 802.11ac Wave2



ECW5410-L
Indoor Dual Radio,
4x4:4 802.11ac Wave2



INDOOR AP

Optimal Client Filtering
Channel Interference Detection
Seamless Roaming between APs
802.1Q VLAN Tagging
Layer 2 Firewall



EAP101
Indoor Dual Radio,
2X2:2 Wi-Fi6



EAP102
Indoor Dual Radio,
4X4:4 Wi-Fi6

ENTERPRISE WIRELESS WIRELESS SOLUTIONS

OUTDOOR AP

IP68-rated Protection
Hotspot 2.0 Support
Lightening Protection
External N-type Antenna Connectors
802.3af/at PoE Support



ECW05211-L
Outdoor Dual Radio
2x2:2 802.11ac Wave 2



OAP100
Outdoor Dual Radio
2x2:2 802.11ac Wave 2



BROADBAND ACCESS

60GHz 802.11ay standard
Mesh network with IPv6 routing
Beam forming Technology
with phased array antenna
Support TDMA-MAC for dynamic
bandwidth allocation
Self-recovery & optimization



MLTG-360
Distribution Node
802.11ay 60GHz
360 Degrees Coverage
TERRAGRAPH CERTIFIED



MLTG-CN
Client Node
802.11ay 60GHz
TERRAGRAPH CERTIFIED



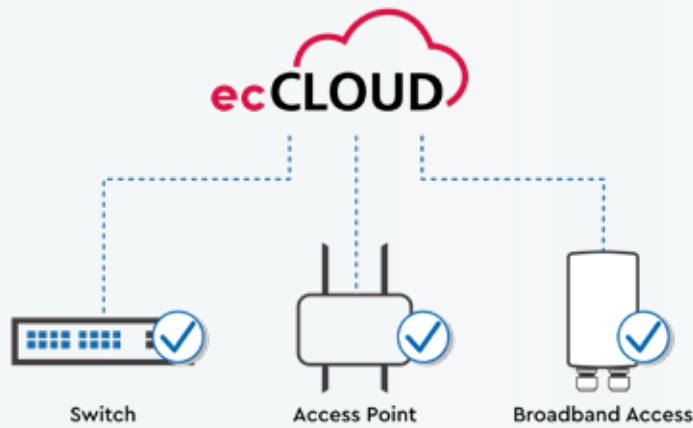
5G

NETWORK MANAGEMENT

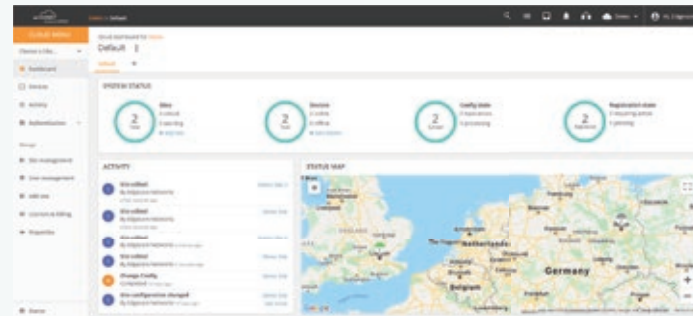


ecCLOUD provides unified visibility and control over Edgecore wired and wireless devices, simplifying deployment, management and monitoring of your single-site or multi-site network. ecCLOUD provides feature rich, scalable, and ease of centralized management for networks of any size.

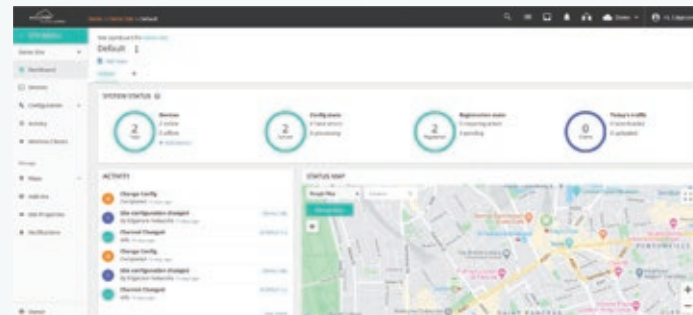
- ✓ Multi-site & Multi-level Management
- ✓ Centralized Device Management
- ✓ Service Plan by Time & Volume
- ✓ SSID-based Custom Captive Portal
- ✓ Logs, Report & Monitoring



“Cloud” Dashboard



“Site” Dashboard



“Device” Dashboard



Wireless Clients (Site)



SUPPORTING YOUR NETWORK

Edgecore Networks’ manufacturing and design centers are ISO 9001 certified. We have excellent operational teams that are committed to ensuring you are receiving products of the highest quality and reliability.

Edgecore Networks backs its high quality manufacturing with a warranty and support policy.

Commercial Support

- Dedicated account manager for the development of projects.
- Possibility of special prices for projects.
- Information about the product lifecycle.

Marketing Support

- Regular communications on exclusive promotions and product information.
- Communication of case studies and success stories

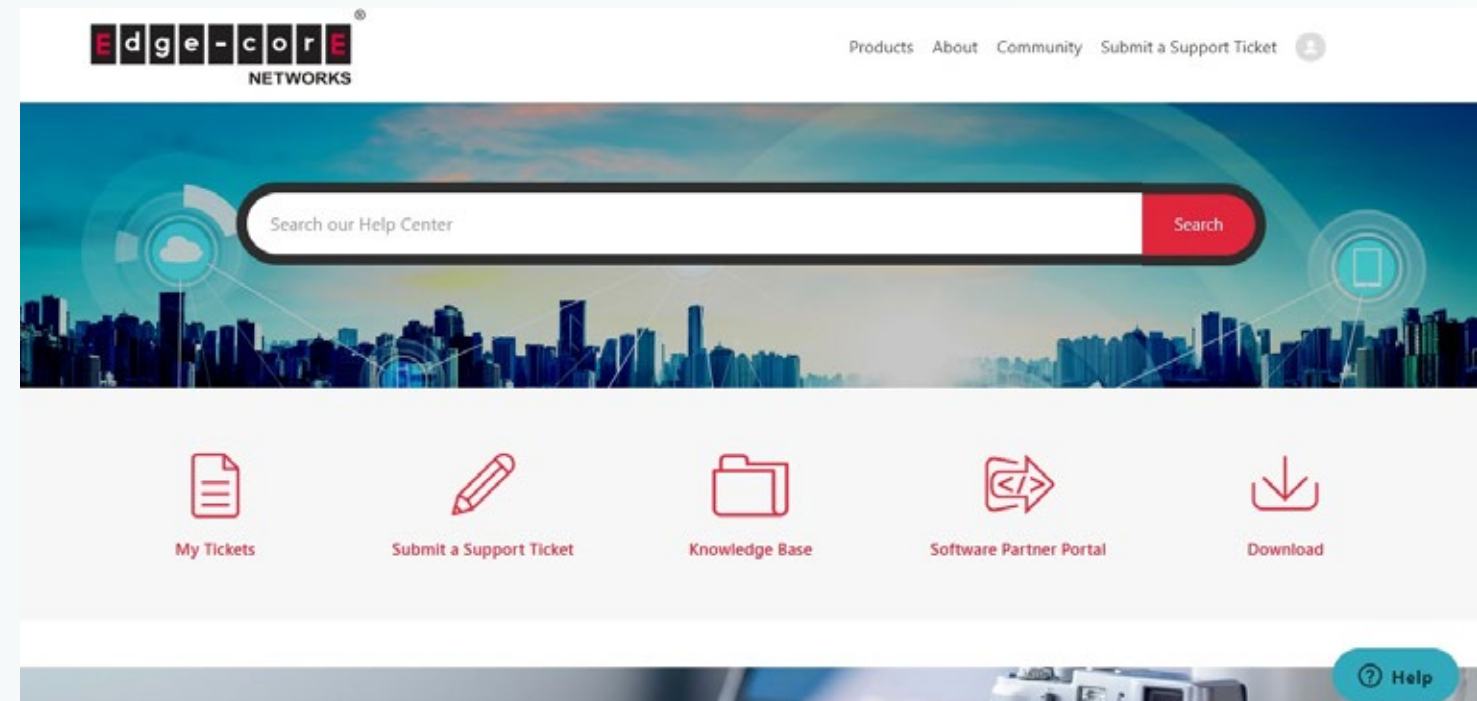
Technical Support

- Edgecore Networks provides both pre- and post-sales technical support.
- For pre-sales assistance, please visit www.edge-core.com, or contact your local Edgecore Networks sales office.
- For post-sales (technical support), please visit www.edge-core.com and select “Support” where you will find FAQs, drivers, firmware and other useful support information.
- Pre-sales support for the design of projects.
- Needs assessment of projects and surveys on site by case.

On-line Support – Edgecore Partner Portal

Edgecore Networks provides a formal Partner Portal - offering a marketing resource and RMA service for partners and potential partners, as well as interacting with customers to collect feedback that maximizes the value of our relationship.

The Partner Portal has six different sections and is designed to be a multi-function portal for partners to quickly access needed information and services. The six sections are: Announcement, RMA, Resource, Application/Co-op/Project, Message, and My Account Management. Visit <http://www.edge-core.com/member-login.php> for more information.



GREEN FRIENDLY

WE CARE

Through creative collaboration with our partners and technology and materials suppliers, Edgecore has developed more environmental friendly and energy-efficient products from design to packaging. At the start of product design, we selectively choose low-environmental impact materials that are in compliance with international regulations.



Edgecore continues to implement our conflict-mineral-free sourcing policy, and is committed to following the Responsible Minerals Initiative (RMI) of RBA's Code of Conduct



All of Edgecore's products are 100% compliant with the requirements of the EU RoHS Directive (2002/95/EC, 2011/65/EU)



Edgecore's eGreen System significantly improves the reliability of sustainable products and verification processes

WEEE:

All Edgecore Networks products are in full compliance with WEEE, the Waste Electrical and Electronic Equipment Directive, setting collection, recycling, and recovery targets for all types of electrical goods.

RoHS:

RoHS stands for Restriction of Hazardous Substances. Edgecore Networks aims at reducing and eliminating hazardous substances used in manufacturing electronic devices, as well as selecting qualified supply chains. We also appraise electronics industry peers to meet compliance with RoHS in an effort to protect and green our mother earth. All of Edgecore's products are 100% compliant with the requirements of EU RoHS Directives (2002/95/EC, 2011/65/EU)

Green Supply Chain:

Edgecore Networks has expanded its care for mother earth to its whole supply chain system, from manufacturer management and certification compliance to packaging and brochure printing. All components, modules, and indirect materials used are in full compliance with a list of restricted substances specified in the Control Standards for Accton Hazardous Substances. The restrictions are not only limited to the 10 substances regulated by the EU RoHS (Restriction of the use of Hazardous Substance' Directive 2011/65/EU), but also includes items regulated by international environmental law and our global customers. In addition, we have built a sustainable supply chain information management platform, called the eGreen System, which incorporates sustainable materials from the beginning of product design and significantly improves the reliability of sustainable products and the verification processes.

Green Office Policy:

Edgecore Networks Corporation, as a wholly-owned subsidiary of the Accton Group, is committed to a 1% annual reduction in greenhouse gas (GHG) emissions, following the mother company policy. Edgecore Networks has begun to implement a green-office policy at its headquarters to reduce energy consumption, increase waste recycling, and to encourage green practices that reduce our carbon footprint.

Certificate

Standard: **ISO 9001:2015**
Certificate Registr. No: **01 100 422 163323200**

Certificate Holder: **Edge-Core Networks Corp.**
3F., No. 1, Chuan Shou Rd., Science-Based Industrial Park,
Hsinchu 300, Taiwan, R.O.C.

Scope: **Design, Development and Sales of Switches, Routers and Ethernet Switches/Fiber Optic Switches and Core Switches**

Final has been furnished by means of an audit that the requirements of ISO 9001:2015 are met

Validity: **The certificate is valid in conjunction with the main certificate from 2018-11-09 until 2020-01-01. It remains valid subject to satisfactory surveillance audits**

2019-12-11



www.certified.com
© 2018/12/11

www.tuv.com



Certificate

Standard: **GB/T 19001-2016 / ISO 9001:2015 / TL 9000-H R6.1/R5.6**
Certificate Registr. No: **17 201 143323200**

Certificate Holder: **Edge-Core Networks Corp.**
3F., No. 1, Chuan Shou Rd., Science-Based Industrial Park,
Hsinchu 300, Taiwan, R.O.C.

Scope: **Design, Development and Sales of Ethernet Switch, Ethernet Switch and Data Center Switch**

Final has been furnished by means of an audit that the requirements of GB/T 19001-2016/ISO 9001:2015 / TL 9000-H R6.1/R5.6 are met

Validity: **The certificate is valid in conjunction with the main certificate from 2018-11-09 until 2020-01-01. It remains valid subject to satisfactory surveillance audits**

2019-12-11



www.tuv.com





Edgecore Networks Corporation

Headquarters

Address : 1, Creation Rd. 3, Hsinchu Science Park,
Hsinchu, 30077, Taiwan, R. O. C
Phone : +886-3-563-8888
Fax : +886-3-668-6111
Email : sales@edge-core.com
support@edge-core.com

Asia Pacific Headquarter (Singapore)

Address : 15 Enggor Street, #10-04, Reality Center
Singapore 079716
Tel : +65-6338-7667
Fax : +65-6338-7767
Email : sales@edge-core.com

Edgecore Americas Networking Corporation

Address : 20 Mason, Irvine, CA 92618
Tel : 949-336-6801
Fax : 949-502-3420

© 2021 Edgecore Networks. All rights reserved.

Information provided by Edgecore Networks is believed to be accurate and reliable. However Edgecore Networks accepts no responsibility for the improper use of this information nor infringements to patents or the rights of third parties. Edgecore Networks reserves the right to change product specifications and catalogue content at any time without prior notice.

* For pricing and availability of this service in your country, please consult your local office for more information. Edgecore Networks reserves the right to amend, suspend or cancel these terms and conditions without notice.

Worldwide Website: www.edge-core.com