



NETCONNECT® structured cabling solutions

EMEA/APAC/CALA regions

YOUR NETWORK

YOUR FUTURE

ENGINEERED FOR WHAT MATTERS MOST

BALANCING PERFORMANCE AND VALUE

You're not unrealistic. You're simply looking for a reliable and affordable structured cabling solution—one portfolio that can support all your enterprise applications: in-building LAN and data center, outside plant and campus networks, fiber and copper. You want it to be hassle-free, easy to deploy, and adaptable enough to support your network today and well into the future.

That's not unrealistic. That's NETCONNECT solutions.

CommScope's NETCONNECT is a comprehensive copper and fiber portfolio—cabling, connectors, panels, cords and jacks—that provides the perfect balance of performance and value across your enterprise network.

Fast to deploy, sustainable and easy to manage, all NETCONNECT solutions meet or exceed the structured cabling standards for enterprise applications. So, you can design with confidence and deploy with speed.

Designed for simplicity and engineered for flexibility, it will meet your physical layer needs today and in the future. Engineered, manufactured and supported by CommScope, the world leader in structured cabling solutions, NETCONNECT solutions provide consistent product availability and quality. Add our global research and manufacturing capabilities, product development and customer support, and NETCONNECT solutions give you everything you need to grow with confidence.

Ten reasons to choose NETCONNECT®

1. One copper/fiber structured cabling portfolio for all your enterprise applications
2. Optimized performance through ongoing third-party testing of copper solutions
3. Online access to factory testing and performance verification with WebTrak® system
4. Backed by 25-year Extended Product Warranty
5. Global support via NETCONNECT-certified installers and CommScope technical and field sales experts
6. Performance meets or exceeds all commercial building cabling standards
7. Global R&D effort with more than 10,000 patents and patent applications
8. Superior, consistent cable terminations with the SL installation tool
9. RJ45 jack options accommodate M-series, SL and keystone faceplates
10. Significant stock available from authorized NETCONNECT distributors

NETCONNECT copper solutions

The NETCONNECT family of copper products includes twisted-pair cabling and patch cords, panels, jacks and accessories for your Category 6A and Category 6 channels. Category 7A and Category 7 cable are available as well.

Category 6A

From the data center to in-building connectivity, NETCONNECT Category 6A solutions satisfy a growing list of network applications, including Wi-Fi®, power over Ethernet (PoE), and 10GBASE-T. All NETCONNECT Category 6A solutions are available in unshielded twisted-pair (U/UTP) and foil-shielded twisted-pair (F/UTP) options that meet the relevant ISO/IEC 11801 standards.

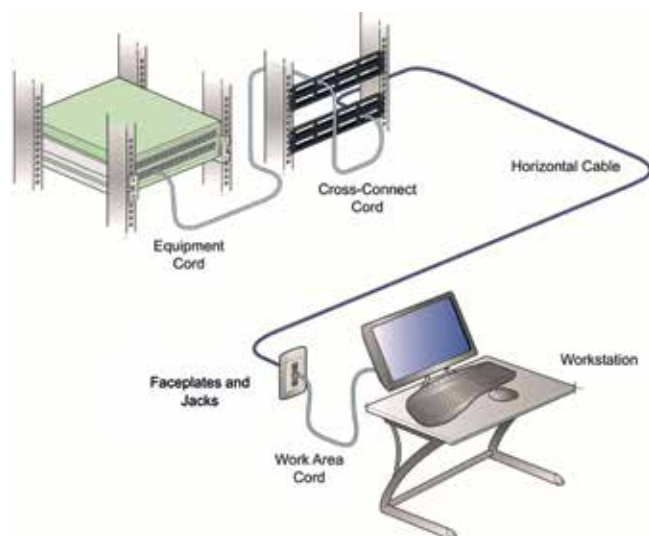
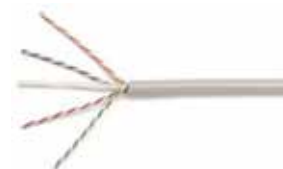


Figure 1. Typical horizontal channel design

CS44 cable

CommScope's CS44Z, CS44R and CS44P Category 6A cables are guaranteed to meet Category 6A specifications. Cable jackets are available in LSZH, riser and plenum, U/UTP, F/UTP and F/FTP constructions that meet a wide range of CPR Euroclass standards. F/UTP and F/FTP cables are available on reels, while U/UTP cable is also available in convenient, easy-to-store CommPak® boxes.



CS67 and CS54 cable

NETCONNECT CS67 S/FTP cables are Category 7 and 7A solutions that can be deployed as part of a Category 6A-compliant channel.¹ These cables are available with LSZH sheaths and meet the requirements for a variety of CPR Euroclasses.



¹ Requires the appropriate Cat 6A NETCONNECT jacks and patch cords

Patch panels

Category 6A patch panels are available in unshielded and shielded options as well as flat and angled designs. Panels are available with a distribution or discrete distribution module design, which accepts jacks (ordered separately).



NETCONNECT copper solutions

Category 6A

Jacks

NETCONNECT SLX shielded jacks build on the industry-leading features of CommScope's existing AMP-TWIST™ SL jacks. They are available in a wide range of colors and offer built-in support for dust covers. SLX jacks support direct-screen termination using the existing JTT termination tool for more simplified and secure screen terminations. These jacks are externally verified to meet Category 6A component compliance per ISO/IEC 11801-1 Ed.1.0 (2017-11).

NETCONNECT SL-style unshielded jacks are also built on AMP-TWIST SL technology and support simplified direct-screen termination. They are available in a range of colors, with or without dust covers.



Patch cords

NETCONNECT Category 6A patch cords deliver superior electrical performance. Available in shielded and unshielded options, they feature transparent and flexible slim-line boots that make them ideal for high-density switch applications. These Category 6A patch cords can be used with CommScope color clips for fast and easy circuit identification and patch cord management.



NETCONNECT copper solutions

Category 6

CS31 cable

CommScope's CS31 Category 6 cables are warranted to meet Category 6 specifications. CS31 cables are UTP and available in LSZH, riser and CM jacket types.

CS34 cable

NETCONNECT CS34Z, CS34R and CS34P Category 6 cables are warranted to meet Category 6 specifications. Available cable jackets include LSZH, riser and plenum, U/UTP and F/UTP constructions. CS34 Category 6 cables comply with a number of CPR Euroclasses. F/UTP Category 6 cables are available on reels, while U/UTP cable is also available in convenient, easy-to-store CommPak boxes.



Patch panels

Category 6 patch panels are available in unshielded and shielded options with flat and angled profiles. Unshielded panels are available with distribution or discrete distribution module designs.² Shielded panels are available only in the discrete distribution module design (jacks ordered separately).

² Requires the appropriate NETCONNECT jacks and patch cords



Jacks

The SLX shielded jack builds on the industry-leading features of the existing AMP-TWIST shielded SL jacks. They are available in a wide range of colors and feature built-in support for dust covers. SLX shielded jacks support direct-screen termination using the existing JTT termination tool, so screen terminations are fast, simple and secure.

The SLX Category 6 jack is externally verified to meet Category 6 component compliance per ISO/IEC 11801-1 Ed.1.0 (2017-11). Unshielded SL jacks are available for SL and keystone faceplates. Both shielded and unshielded jacks are built on SL technology and termination methods and are available in a range of colors.



Patch cords

NETCONNECT Category 6 patch cords are known for their superior and reliable electrical performance. Available as shielded and unshielded solutions, they have transparent and flexible slim-line boots for high-density switch applications. They are compatible with CommScope color clips for fast and easy circuit identification and patch cord management.



NETCONNECT fiber solutions

With multimode and singlemode options, NETCONNECT fiber solutions support applications ranging from campus and outside plant installations to data centers, buildings and fiber to the desktop. Modular connectivity components—including fiber enclosures, patch panels, preterminated cassettes, modules, and adapters—enable you to deploy quickly and migrate easily as your needs grow. The NETCONNECT fiber portfolio also includes a variety of termination options, from traditional field termination to fusion splicing and tool-less termination with CommScope's Qwik II® connector technology.

Distribution cable and MPO fiber cable assemblies

NETCONNECT fiber cabling includes multimode and singlemode ruggedized options for distribution and fanout applications. MPO cabling features multimode and singlemode patch, trunk or fanout cable assemblies, making it suitable for a broad range of environments: OSP direct buried, duct and aerial, indoor/outdoor and indoor-only.



Wall-mount enclosures

The NETCONNECT wall-mount fiber enclosure handles splicing and termination of in-building fiber cable or outside plant cable. The enclosure can be configured for multiple adapter applications and up to 96 LC connector terminations. By adding the appropriate splice holders, the enclosure can also house up to 96 single-fusion splices, 72 mechanical splices or 36 mass-fusion splices.



Fiber patch panels

The G2™ family of panels and modules is a versatile solution that is available in configurations for any application. No matter what polarity, fiber count or performance is needed, the G2 family has a solution. The EPX-G2 panel is a low-cost solution for usable density in a 1U format. Panels are available in fixed or sliding designs and in 1U, 2U and 4U configurations. Each 1U of rack space holds four modules, cassettes or adapter packs.

NETCONNECT standard-density (SD) fiber patch panels support multimode and singlemode fiber cable and MPO assemblies. Applications include expanding telecommunication closets to risers, patching in small data centers, and use in intelligent buildings, education and government facilities and more. Panels are available in 1U, 2U and 4U configurations. Each 1U of rack space holds three splice cassettes or preterminated modules or 36 duplex LC (72 fibers) or 24 MPO pass-through adapters (288 fibers).



Both options are completely modular for easy deployment and upgrade; it's a future-ready platform for all your fiber patching needs.

NETCONNECT fiber solutions

Both options are completely modular for easy deployment and upgrade; it's a future-ready platform for all your fiber patching needs.

Modules

Fiber modules are available with one or two 12-fiber MPO connections on the back. Fiber modules also support preterminated MPO trunk cables for rapid deployment in the data center. All fiber modules are factory tested and ready for installation.



Splice cassettes

Fiber splicing cassettes feature pre-installed fiber pigtails and support fusion splicing within the cassette. Cassettes are available for OM4 multimode and OS2 singlemode applications and accommodate LC, LC/APC, SC and SC/APC connectors.



Adapter packs

NETCONNECT fiber adapter packs support OM3 and OM4 multimode and singlemode fiber, and LC, keyed LC, LC/APC, SC and SC/APC connectors.

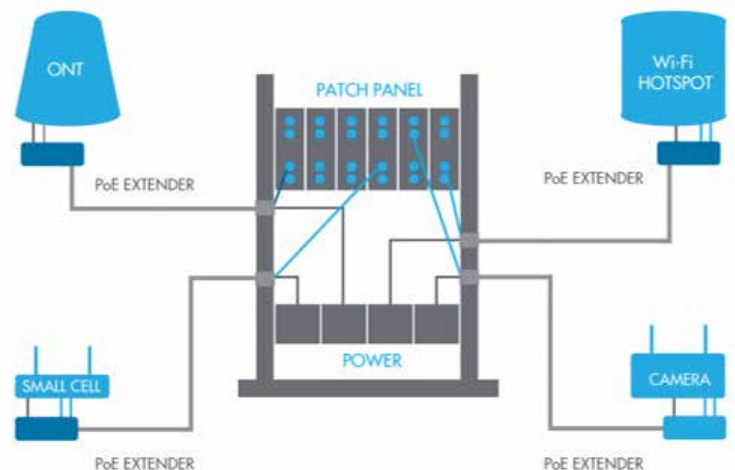


Powered Fiber Cable System

CommScope's Powered Fiber Cable System (PFCS) distributes power and fiber within the same cable, simplifying the addition of new small cells, Wi-Fi access points, IP cameras and other powered network devices. It delivers reliable, low-voltage power from a centralized source without the need for extra conduits, transformers or remote uninterrupted power supplies (UPS).

The PFCS consists of hybrid cables, PoE extenders, power transmission management, safety and overload protection, and a universal power supply (PSU).

For more information on the Powered Fiber Cable System, please refer to the [PFCS solutions guide](#).



Complete confidence, end to end

The NETCONNECT portfolio offers a full range of copper and fiber cable and connectivity solutions, all designed for the superior mating and reliable performance your system needs. Working together across your entire network, NETCONNECT solutions provide a complete infrastructure platform—copper to fiber, outside to inside, backbone to the desktop.

And, with CommScope's Certified Installer Program, installation is handled by trained experts with demonstrated proficiency in areas such as industry codes and standards, infrastructure design, terminations, splicing, testing and troubleshooting. So you know it's done right.

Complete, compatible solutions from a single trusted source: NETCONNECT from CommScope.

Driven. Dynamic. Dedicated.

Our 40 years of proven experience testifies to our ability to anticipate any need, solve any challenge and pursue any opportunity. With a history of results and a focus on tomorrow, CommScope is the premier choice for smarter and faster performance. With each new improvement to your network infrastructure, we are readying you for the future. To learn more, contact your CommScope account executive or visit www.commscope.com.

Let's get started.

CommScope pushes the boundaries of communications technology with game-changing ideas and ground-breaking discoveries that spark profound human achievement. We collaborate with our customers and partners to design, create and build the world's most advanced networks. It is our passion and commitment to identify the next opportunity and realise a better tomorrow. Discover more at commscope.com.

COMMSCOPE®

commscope.com

Visit our website or contact your local CommScope representative for more information.

© 2024 CommScope, LLC. All rights reserved.

CommScope and the CommScope logo are registered trademarks of CommScope and/or its affiliates in the U.S. and other countries. For additional trademark information see <https://www.commscope.com/trademarks>. All product names, trademarks and registered trademarks are property of their respective owners. Wi-Fi is a trademark of the Wi-Fi Alliance.

BR-112972.2-EN.GB (07/24)

Confidence in writing

The entire NETCONNECT portfolio is backed by CommScope's 25-Year Extended Product Warranty. This unique blanket of support offers, in writing, that:

- All NETCONNECT products will meet or exceed performance specifications.
- NETCONNECT cabling channels will support all warranted applications, often beyond the distances specified.
- Any NETCONNECT product that does not perform to the stated specifications will be replaced at no cost, whether a problem arises in the first year or the 25th.